



TOYOTA - Ø 92

87-72076-STD



Motor Özellikleri
(Engine Specifications)

İmalatçı (Manufacturer):
TOYOTA

Çap (Diameter): Ø 92
FM Grup No: 8211

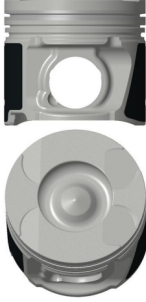
D-4D 2KD-FTV

4 Sil. Dizel 2494cc
65-108 kw/ 88-147ps 18,5
HILUX VII
2010....

Piston Ölçüleri
(Piston Dimensions)

A : 54.200
B- : 15.850
BØ : 48.250
C1 : 0.500
C2 : 1.100
D : 82.200
E : 9.000

Pim: 34 x 65



Piston Özellikleri
(Piston Features)

Sert Anotlama
(Hard Anodizing)
Soğutma Kanallı
(Coolin Gallery)
Yağ Püskürtme Oyuğu
(Oil Jet Cut-out)
Gözarası Konik
(Conical Eye Gap)



Piston Parça No
(Piston Part No)

87-899300-02
87-72076-STD

87-899307-02
87-72076 0,50



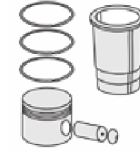
Segman Seti
(Ring Set)

06-899300-00-STD
06-899307-00 0,50

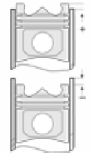
2.000 CKS ST
1.500 NT ST
3.000 NT ST



Silindir Gömleği
(Liner)



Silindir Kit
(Assembly Set)



Piston - Blok Montaj
Yüksekliği
(Piston - Block
Assembly Height)

0,70 Conta ile
(With Gasket)
-020/-0,10

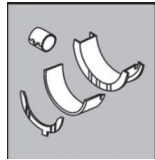
0,75 Conta ile
(With Gasket)
-0,10/+0,05

0,80 Conta ile
(With Gasket)
-0,05/+0,05

0,85 Conta ile
(With Gasket)
+0,05/+0,10

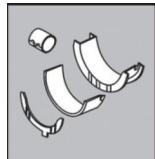
0,90 Conta ile
(With Gasket)
+0,10/+0,20

ANA YATAK
(MAIN BEARING)



H1237/5 STD

KOL YATAK
(ARM BED)



71-4565/4 STD

SİL. KAPAK. CONTA
(CYLINDER HEAD GASKET)



FF5980

