



VOLVO - Ø 98,42

87-72212-STD



Motor Özellikleri
(Engine Specifications)

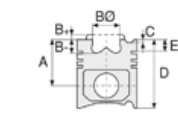
İmalatçı (Manufacturer):
VOLVO
Çap (Diameter): Ø 98,42
FM Grup No: 8896

TD60B

6 Sil. Dizel 5480cc
128-132 kw (174-180 PS)
16/17:1 Turbo 2005, 2105,
2600, 2650, 2654, 3200,
3300, 860S, 861, B610,
DR860 T, DR860 TL,
F607-614, F615-617, F6S,
LM840, LM841, LM845,
LM846, T800A, T810,
T814, TC860 TL
1978 - 1985

TD60C

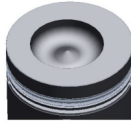
6 Sil. Dizel 5480cc
108-113Kw (147-154 PS)
Turbo 2005, 2105, 2600,
2650, 2654, 3200, 3300,
860S, 861, DR860 T,
DR860 TL, F615-617, F6S,
LM840, LM841, LM845,
LM846, T800A, T810,
T814, TC860 TL
1978 - 1985



Piston Ölçüleri
(Piston Dimensions)

A : 79.400
B- : 21.770
BØ : 57.000
BX : 2.000
D : 124.400
E : 24.000

Pim : 40 x 77,3



Piston Özellikleri
(Piston Features)

Segman Taşıyıcı
(Ring Carrier)
Gözarası Düz
(Flat Eye Gap)



Piston Parça No
(Piston Part No)

87-405500-42
87-72212-STD



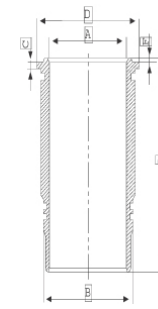
Segman Seti
(Ring Set)

06-405500-10-STD
2.385 CRP IKA
3.160 CRP IKA
4.747 CRP STD
Goetze® LKZ-Ring®



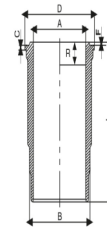
Silindir Gömleği
(Liner)

14-400510-00-WH
B : 110.000
L : 234.500
D : 119.100
C : 11.610
F : 0.740

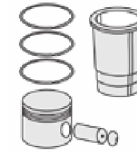


O-RİNG BİLGİ
(O-ring Information)
24-24390-01/O
1x 108,5*5,8 FPM
1x 108,5*5,8 EPDM
1x 104*1,5 FPM

14-458900-00-WH
B : 109.928
L : 237.150
D : 119.100
C : 9.660
F : 3.590
R : 23.850

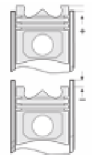


O-RİNG BİLGİ
(O-ring Information)
24-35043-41/O
1x 109*5,8 FPM LILA
2x 109*5,8 EPDM
1x 104*1,5 FPM



Silindir Kit
(Assembly Set)

89-405500-52-STD
89-72212-STD



Piston - Blok Montaj
Yüksekliği
(Piston - Block
Assembly Height)

+0,05 / +0,55





VOLVO - Ø 98,42

87-72212-STD



Motor Özellikleri
(Engine Specifications)



Piston Ölçüleri
(Piston Dimensions)



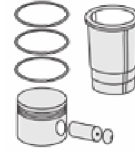
Piston Parça No
(Piston Part No)



Segman Seti
(Ring Set)



Silindir Gömleği
(Liner)

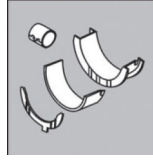


Silindir Kit
(Assembly Set)



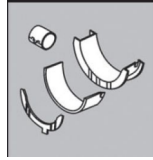
Piston - Blok Montaj
Yüksekliği
(Piston - Block
Assembly Height)

ANA YATAK
(MAIN BEARING)



H969/7 STD

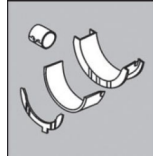
KOL YATAK
(ARM BED)



71-3446/6 STD

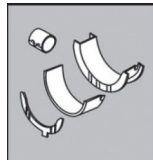
71-3695/6 STD

AY YATAK
(THRUST WASHER)



A121/4 STD

KOL BURCU
(SMALL END BUSH)



55-3524 SEMI

SİL. KAPAK. CONTA
(CYLINDER HEAD GASKET)



DK211

