



VOLVO - Ø 98,42

87-72215-STD



Motor Özellikleri
(Engine Specifications)

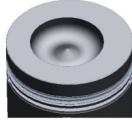
İmalatçı (Manufacturer):
VOLVO
Çap (Diameter): Ø 98,42
FM Grup No: 880171

TD61F-TD61G-TD61GA-
TD61GD-TD61GS
6 Sil. Dizel 5480cc 112-152
KW-152-207HP FL 614,
FL 616, L 70 C
1996...

Piston Ölçüleri
(Piston Dimensions)

A : 79.400
B- : 21.800
BØ : 57.000
BX : 2.000
D : 124.400
E : 24.000

Pim : 40 x 77,3



Piston Özellikleri
(Piston Features)

Segman Taşıyıcı
(Ring Carrier)
Gözarası Düz
(Flat Eye Gap)

Piston Parça No
(Piston Part No)

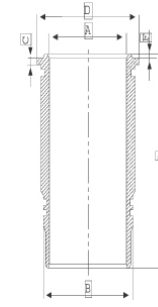
87-405500-02
87-72215-STD

Segman Seti
(Ring Set)

06-405500-10-STD
2.385 CRP IKA
3.160 CRP IKA
4.747 CRP STD
Goetze® LKZ-Ring®

Silindir Gömleği
(Liner)

14-400510-00-WH
B : 110.000
L : 234.500
D : 119.100
C : 11.610
F : 0.740



O-RİNG BİLGİ
(O-ring Information)
24-24390-01/0
1x 108,5*5,8 FPM
1x 108,5*5,8 EPDM
1x 104*1,5 FPM

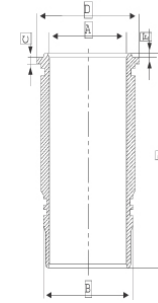
Silindir Kit
(Assembly Set)

89-405500-02-STD
89-72215-STD

Piston - Blok Montaj
Yüksekliği
(Piston - Block
Assembly Height)

+0,05 / +0,55

14-401210-00-WH
B : 110.000
L : 237.400
D : 119.100
C : 9.660
F : 3.590



O-RİNG BİLGİ
(O-ring Information)
24-35043-41/0
1x 109*5,8 FPM LILA
2x 109*5,8 EPDM
1x 104*1,5 FPM

89-405500-12-STD
89-72215-STD





VOLVO - Ø 98,42

87-72215-STD



Motor Özellikleri
(Engine Specifications)



Piston Ölçüleri
(Piston Dimensions)



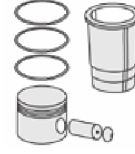
Piston Parça No
(Piston Part No)



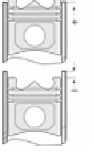
Segman Seti
(Ring Set)



Silindir Gömleği
(Liner)

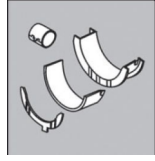


Silindir Kit
(Assembly Set)



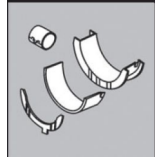
Piston - Blok Montaj
Yüksekliği
(Piston - Block
Assembly Height)

ANA YATAK
(MAIN BEARING)



H969/7 STD

KOL YATAK
(ARM BED)



71-3695/6 STD

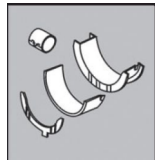
71-3446/6 STD

AY YATAK
(THRUST WASHER)



A121/4 STD

KOL BURCU
(SMALL END BUSH)



55-3524 SEMI

SİL. KAPAK. CONTA
(CYLINDER HEAD GASKET)



DT830

