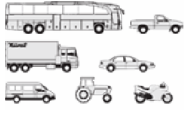




MERCEDES BENZ LKW - Ø 97,5

87-72536-STD

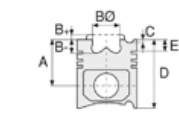


**Motor Özellikleri**  
(Engine Specifications)

İmalatçı (Manufacturer):  
MERCEDES BENZ LKW  
Çap (Diameter): Ø 97,5  
FM Grup No: 6027

**OM 364A**  
4 Sil. Dizel 3970cc  
77 KW ( 105 PS )  
1717, 711, 811  
1989....

**OM 366A EURO 1**  
6 Sil. Dizel 5958cc  
77 KW ( 105 PS )  
1717, 711, 811  
1989....



**Piston Ölçüleri**  
(Piston Dimensions)

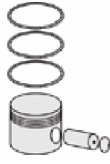
A : 62.800  
B - : 23.000  
BØ : 54.300  
BX : 5.000  
D : 107.800  
E : 20.700

Pim: 36 x 82,5



**Piston Özellikleri**  
(Piston Features)

Gözarası Düz  
(Flat Eye Gap)



**Piston Parça No**  
(Piston Part No)

87-740000-13  
87-72536-STD

87-740007-13  
87-72536 0,50



**Segman Seti**  
(Ring Set)

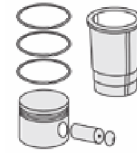
06-740000-30-STD  
06-740007-30 0.50 mm

2.500 PVD ST  
2.500 CR GOE  
4.000 CR STD

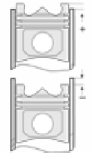
Goetze® LKZ-Ring®



**Silindir Gömleği**  
(Liner)



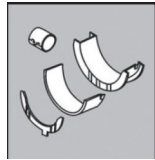
**Silindir Kit**  
(Assembly Set)



**Piston - Blok Montaj**  
Yüksekliği  
(Piston - Block  
Assembly Height)

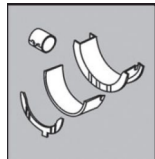
-0,08/+0,44

**ANA YATAK**  
(MAIN BEARING)



H048/5 STD

**KOL YATAK**  
(ARM BED)



71-3572/4 STD

**SİL. KAPAK. CONTA**  
(CYLINDER HEAD GASKET)



DS310

