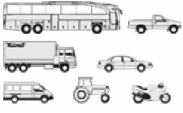




RVI - Ø 135

87-73835-STDB

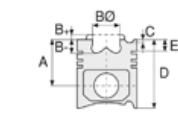


Motor Özellikleri
(Engine Specifications)

İmalatçı (Manufacturer):
RVI
Çap (Diameter): 135
FM Grup No: 7411

MIDR O6.35.40 J3/M3
/N3 EURO1

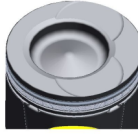
6 Sil. Dizel 12024cc
283/305/235 Kw (385/
415/320 PS) 18:1
Turbocharged Intercooled
AE 385, AE 420, CBH32,
CBH385, CLM 385,
CLM320, GBH, GBH320,
MAJOR R 385, MAJOR R
420
1996....



Piston Ölçüleri
(Piston Dimensions)

A : 90.400
B- : 21.450
BØ : 77.800
BX : 5.000
C1 : 0.900
D : 149.400
E : 12.000

Pim: 55 x 108



Piston Özellikleri
(Piston Features)

Segman Taşıyıcı
(Ring Carrier)
Burçlu Piston
(Bushing Piston)
Gözarası Düz
(Flat Eye Gap)



Piston Parça No
(Piston Part No)

87-335900-52
87-73835-STDB



Segman Seti
(Ring Set)

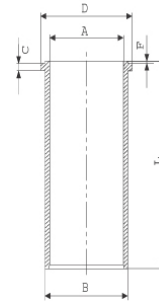
06-335900-80-STD
4.000 CK KV1
3.000 STD
4.000 CR STD

Goetze® LKZ-Ring®



Silindir Gömleği
(Liner)

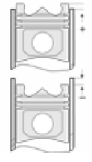
14-040040-00-DH
B : 143.000
L : 288.000
D : 148.900
C : 7.600
F : 1.000



Dış yüzeyi fosfat kaplı
(Outer Surface
Phosphate Coated)



Silindir Kit
(Assembly Set)



Piston - Blok Montaj
Yüksekliği
(Piston - Block
Assembly Height)





RVI - Ø 135

87-73835-STDB



Motor Özellikleri
(Engine Specifications)



Piston Ölçüleri
(Piston Dimensions)



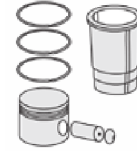
Piston Parça No
(Piston Part No)



Segman Seti
(Ring Set)



Silindir Gömleği
(Liner)

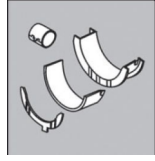


Silindir Kit
(Assembly Set)



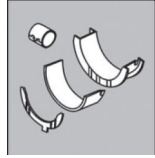
Piston - Blok Montaj
Yüksekliği
(Piston - Block
Assembly Height)

ANA YATAK
(MAIN BEARING)



H1054/7 STD

KOL YATAK
(ARM BED)

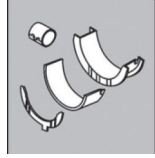


71-4113 STD

71-4239 STD

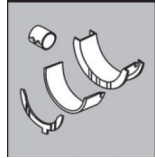
71-4306 STD

AY YATAK
(THRUST WASHER)



A264/4 STD

KOL BURCU
(SMALL END BUSH)



55-4124 SEMI

SİL. KAPAK. CONTA
(CYLINDER HEAD GASKET)



DV530

