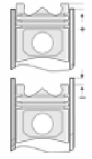
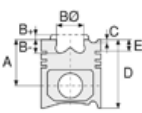




VOLVO - Ø 131

87-75501-STD



Motor Özellikleri
(Engine Specifications)

İmalatçı (Manufacturer):
VOLVO
Çap (Diameter): Ø 131
FM Grup No: 880160

D13C / D

6 Sil. Dizel 12780cc
324-353 kw / 440-480
PS 18.1;
Euro 5
440-480
2009...

Piston Ölçüleri
(Piston Dimensions)

A : 75.880
B- : 18.100
BØ : 89.000
D : 112.900
E : 11.500

Pim: 58 x 76



Piston Özellikleri
(Piston Features)

Soğutma Kanallı
(Coolin Gallery)
Gözarası Konik
(Conical Eye Gap)

Piston Parça No
(Piston Part No)

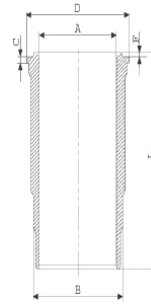
87-833500-02
87-75501-STD
Tek Parça Çelik Piston
(MonoSteel Piston)

Segman Seti
(Ring Set)

06-833500-20-STD
3.500 PVD KV1
2.500 NT ST
3.000 NT ST

Silindir Gömleği
(Liner)

14-451190-00-WH
B : 144.000
L : 261.800
D : 159.600
C : 11.200
F : 0.900



Euro 6 Malzemeli /
O-Ring Bilgi
(Euro 6 Material /
O-Ring Information)
24-24468-02/O
1x 142,8*5,8 FPM
2x 142,8*5,8 EPDM
1x 141*2,4 FPM

Silindir Kit
(Assembly Set)

89-833500-02-STD
89-75501-STD

Piston - Blok Montaj
Yüksekliği
(Piston - Block
Assembly Height)

+0,15/+0,65





VOLVO - Ø 131

87-75501-STD



Motor Özellikleri
(Engine Specifications)



Piston Ölçüleri
(Piston Dimensions)



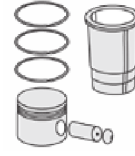
Piston Parça No
(Piston Part No)



Segman Seti
(Ring Set)



Silindir Gömleği
(Liner)



Silindir Kit
(Assembly Set)



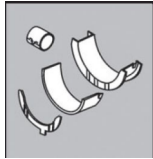
Piston - Blok Montaj
Yüksekliği
(Piston - Block
Assembly Height)

ANA YATAK
(MAIN BED)



H1015/7 STD

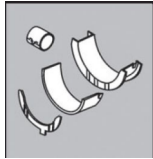
KOL YATAK
(ARM BED)



71-4052/6 STD

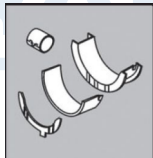
71-4949/6 STD

AY YATAK
(THRUST WASHER)



A131/4 STD

KOL BURCU
(ARM BUSH)



55-4054 SEMI

