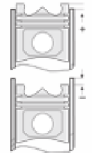
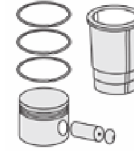
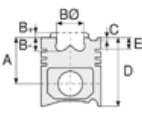




BMW - Ø 82

87-70270-STD



Motor Özellikleri
(Engine Specifications)

İmalatçı (Manufacturer):
BMW
Çap (Diameter): Ø 82
FM Grup No: 1460

B38 Euro 6 1.5L /
B48B20 2.0L
3 Sil / 4 Sil Benzin
80 kW / 109 PS
1499 / 1996
116i-118i-120i-218i-
220i-216i
2015 -

Piston Ölçüleri
(Piston Dimensions)

A : 33.300
B- : 2.000
BØ : 56.000
C1 : 4.500
C2 : 4.800
D : 52.000
E : 8.150

Pim : 22 x 51






Piston Özellikleri
(Piston Features)

Sert Anotlama
(Hard Anodizing)
Gözarası Konik
(Conical Eye Gap)

Piston Parça No
(Piston Part No)

87-817000-02
87-70270-STD
87-70270-050
87-817007-02

Segman Seti
(Ring Set)

06-817000-50-STD
1.000  NT ST
1.500  F14
2.000  CR GOE

Silindir Gömleği
(Liner)

Silindir Kit
(Assembly Set)

Piston - Blok Montaj
Yüksekliği
(Piston - Block
Assembly Height)

