



MERCEDES BENZ LKW - Ø 128

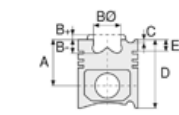
87-70518-STD A



Motor Özellikleri
(Engine Specifications)

İmalatçı (Manufacturer):
MERCEDES BENZ LKW
Çap (Diameter): Ø 128
FM Grup No: 59040

OM 457 LA EURO 2
6 Sil. Dizel 11970cc
185,220,260
KW (252,299,354) 17.75:1
Turbo,LLK
CITARO, O 415,
O 530, O 580
1997....



Piston Ölçüleri
(Piston Dimensions)

A : 90.050
B - : 18.000
BØ : 89.500
D : 140.050
E : 12.000

Pim: 52 x 103



Piston Özellikleri
(Piston Features)

Segman Taşıyıcı
(Ring Carrier)
Soğutma Kanallı
(Coolin Gallery)
Yağ Püskürtme Oyuğu
(Oil Jet Cut-out)
Gözarası Konik
(Conical Eye Gap)



Piston Parça No
(Piston Part No)

87-179350-02
87-70518-STD A



Segman Seti
(Ring Set)

06-179350-20-STD

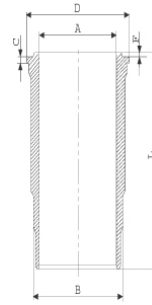
3.000 PS ST
3.000 CR IKA
4.000 CR STD

Goetze® LKZ-Ring® /
Yağ Segmanı Matkap
Delikli (Oil Ring Drill
Perforated)

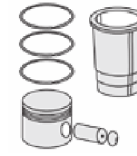


Silindir Gömleği
(Liner)

14-450480-00-WH
B : 144.500
L : 266.300
D : 155.600
C : 10.120
F : 1.100

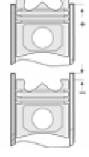


Dış Yüzeyi Krom Kaplı /
O-RING Bilgi
(Outer Surface
Chrome Plated /
O-RING Information)
24-35042-40/O
2x 144*154*7 FPM
1 ADET SHIM



Silindir Kit
(Assembly Set)

89-179350-02-STD
89-70518-STD A

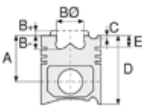


Piston - Blok Montaj
Yüksekliği
(Piston - Block
Assembly Height)





Motor Özellikleri
(Engine Specifications)



Piston Ölçüleri
(Piston Dimensions)



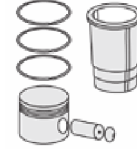
Piston Parça No
(Piston Part No)



Segman Seti
(Ring Set)



Silindir Gömleği
(Liner)

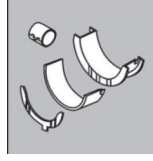


Silindir Kit
(Assembly Set)



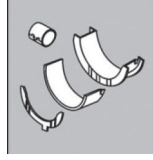
Piston - Blok Montaj
Yüksekliği
(Piston - Block
Assembly Height)

ANA YATAK
(MAIN BEARING)



H075/7 STD

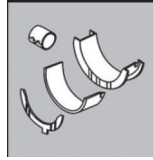
KOL YATAK
(ARM BED)



71-2965 STD

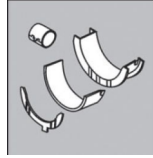
71-3893/6 STD

EKSANTRİK YATAK
(ECCENTRIC BEARING)



N205/7 SEMI

KOL BURCU
(SMALL END BUSH)



55-3328 SEMI

SİL. KAPAK. CONTA
(CYLINDER HEAD GASKET)

30-030171-00



30-030424-00

AF5370

ÜST BÖLÜM TAKIM CONTA
(UPPER PART KIT GASKET)



21-30171-00/0

ALT BÖLÜM TAKIM CONTA
(LOWER SECTION KIT GASKET)



22-23336-10/0

