



Motor Özellikleri
(Engine Specifications)

İmalatçı (Manufacturer):
MERCEDES BENZ LKW
Çap (Diameter): Ø 128
FM Grup No: 5960

**OM 421.900/901/
906/908**

6 Sil. Dizel 10965cc
159 KW (216 PS) 16,5:1
1222, 1422, 1622,
1922, 2222, O 303
1979....

OM 422.900/905-915

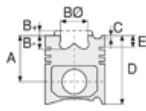
8 Sil. Dizel 14618cc
184/206 KW
(250/280 PS) 16,5:1
1620, 1625, 1928,
2028, 2228,
2628, O 303
1979....

OM 423.900/905/909

10 Sil. Dizel 18273cc
261 KW (355 PS) 16,5:1
1636, 1936, 2036,
2235, 2236, 2536,
2636, 3336, 3836
1981....

OM 424

12 Sil. Dizel 21930cc
309 KW (420 PS)
16,5:1
Endüstriyel (Industrial)
1988....



Piston Ölçüleri
(Piston Dimensions)

A : 81.350
B - : 24.100
BØ : 70.000
BX : 3.000
BY : 1.500
D : 126.350
E : 21.100

Pim: 46 x 99



Piston Özellikleri
(Piston Features)

Segman Taşıyıcı
(Ring Carrier)
Yağ Püskürtme Oyuğu
(Oil Jet Cut-out)
Gözarası Düz
(Flat Eye Gap)



Piston Parça No
(Piston Part No)

87-179300-33
87-70524-STDID
0,20 mm Kısa (Short)
87-179300-32
87-70524-STDD



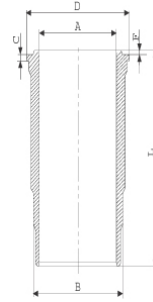
Segman Seti
(Ring Set)

06-179300-20-STD
3.000 PS ST
3.000 CR IKA
4.000 CR STD
Goetze® LKZ-Ring®

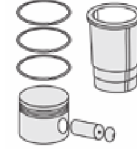


Silindir Gömleği
(Liner)

14-457080-00-WH
B : 144.500
L : 253.000
D : 153.800
C : 10.070
F : 1.000

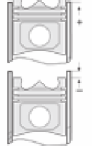


Dış Yüzeyi Krom Kaplı /
O-RING Bilgi
(Outer Surface
Chrome Plated /
O-RING Information)
24-35005-00/O
2x 140*1,9 FPM
2x 144*3,8 FPM



Silindir Kit
(Assembly Set)

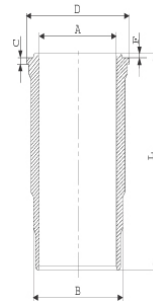
89-179300-33-STD
89-70524-STDN



Piston - Blok Montaj
Yüksekliği
(Piston - Block
Assembly Height)

- 0,07 / + 0,43

14-451160-00-WH
B : 144.500
L : 253.000
D : 153.800
C : 10.070
F : 1.000

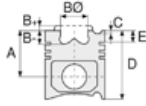


O-RING Bilgi
(O-RING Information)
24-35005-00/O
2x 140*1,9 FPM
2x 144*3,8 FPM





Motor Özellikleri
(Engine Specifications)



Piston Ölçüleri
(Piston Dimensions)



Piston Parça No
(Piston Part No)

87-181700-93
87-70524-STDT



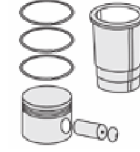
Segman Seti
(Ring Set)

06-181700-80-STD
3.000 CK KV1
3.000 CK IKA
4.000 CR STD
Goetze® LKZ-Ring®



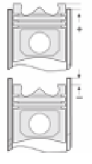
Silindir Gömleği
(Liner)

14-451160-00-WH
O-RING Bilgi
(O-RING Information)
24-35005-00/O
2x 140*1,9 FPM
2x 144*3,8 FPM



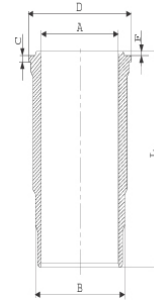
Silindir Kit
(Assembly Set)

89-181700-94-STD
89-70524-STDT



Piston - Blok Montaj
Yüksekliği
(Piston - Block
Assembly Height)

14-452030-00-WH
B : 144.500
L : 253.000
D : 153.800
C : 9.920
F : 1.000



O-RING Bilgi
(O-RING Information)
24-26802-00/O
2x 144*3,8 FPM
1x 140*1,9 FPM
1 ADET SHIM

89-181700-93-STD
89-70524-STDZ

87-178300-12
87-70524-STDW

06-178300-80-STD
3.000 PS ST
3.000 CK IKA
4.000 CR STD
Goetze® LKZ-Ring®

14-451160-00-WH
O-RING Bilgi
(O-RING Information)
24-35005-00/O
2x 140*1,9 FPM
2x 144*3,8 FPM

89-179300-12-STD
89-70524-STDW

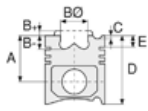
14-457080-00 WH
Dış Yüzeyi Krom Kaplı /
O-RING Bilgi
(Outer Surface
Chrome Plated /
O-RING Information)
24-35005-00/O
2x 140*1,9 FPM
2x 144*3,8 FPM

89-178300-32-STD
89-70524-STDL





Motor Özellikleri
(Engine Specifications)



Piston Ölçüleri
(Piston Dimensions)



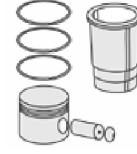
Piston Parça No
(Piston Part No)



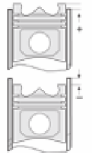
Segman Seti
(Ring Set)



Silindir Gömleği
(Liner)

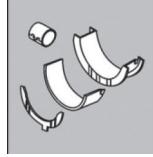


Silindir Kit
(Assembly Set)



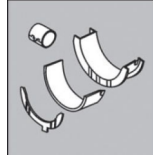
Piston - Blok Montaj
Yüksekliği
(Piston - Block
Assembly Height)

ANA YATAK
(MAIN BEARING)



H821/4 STD

KOL YATAK
(ARM BED)

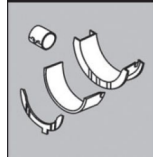


71-2965 STD

71-3009 STD

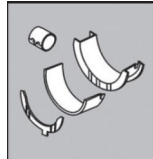
71-3289/2 STD

EKSANTRİK YATAK
(ECCENTRIC BEARING)



N110/4L STD

KOL BURCU
(SMALL END BUSH)



55-3328 SEMI

SİL. KAPAK. CONTA
(CYLINDER HEAD GASKET)



30-024941-30

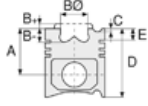
30-026235-10

30-026235-30

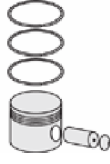




Motor Özellikleri
(Engine Specifications)



Piston Ölçüleri
(Piston Dimensions)



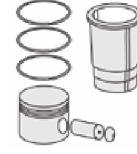
Piston Parça No
(Piston Part No)



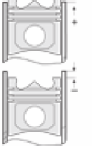
Segman Seti
(Ring Set)



Silindir Gömleği
(Liner)



Silindir Kit
(Assembly Set)



Piston - Blok Montaj
Yüksekliği
(Piston - Block
Assembly Height)

ÜST BÖLÜM TAKIM CONTA
(UPPER PART KIT GASKET)



21-26235-26/0

ALT BÖLÜM TAKIM CONTA
(LOWER SECTION KIT GASKET)



22-23576-03/0

FULL TAKIM CONTA
(FULL SET GASKET)



20-26235-41/0

