



**Motor Özellikleri**  
(Engine Specifications)

İmalatçı (Manufacturer):  
MERCEDES BENZ LKW  
Çap (Diameter): Ø 128  
FM Grup No: 5961

**OM 421A.901-400/  
401,951**

6 Sil. Dizel 10965cc  
184 Kw (250 PS) 16,25:1  
Turbo  
O 303  
1985....

**OM 422A.901-400/  
410,952/954**

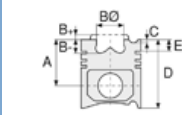
8 Sil. Dizel 14618cc  
243 Kw (330 PS) 16,25:1  
Turbo  
1633, 1635, 1933,  
2033, 2035, 2233,  
2235, 2533, 2633,  
2635, 3333, O 303  
1980....

**OM 422LA.901-500,  
953/955**

8 Sil. Dizel 14618cc  
320 Kw (435 PS) 16,25:1  
Turbocharged Intercool  
1638, 1644, 1938,  
2238, 2244,  
2638, 2644  
1980....

**OM 423A.901/  
901-400**

10 Sil. Dizel 18273cc  
301 Kw (409 PS) 16,25:1  
Turbo  
Endüstriyel (Industrial)



**Piston Ölçüleri**  
(Piston Dimensions)

A : 81.350  
B- : 25.400  
BØ : 70.000  
BX : 3.000  
BY : 1.500  
D : 126.350  
E : 21.100

Pim: 46 x 105



**Piston Özellikleri**  
(Piston Features)

Segman Taşıyıcı  
(Ring Carrier)  
Yağ Püskürtme Oyuğu  
(Oil Jet Cut-out)  
Gözarası Konik  
(Conical Eye Gap)



**Piston Parça No**  
(Piston Part No)

87-179300-43  
87-70525-STDB



**Segman Seti**  
(Ring Set)

06-179300-20-STD

3.000 PS ST  
3.000 CR IKA  
4.000 CR STD

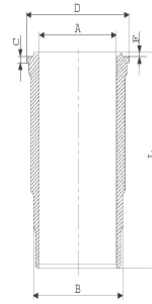
Goetze® LKZ-Ring®



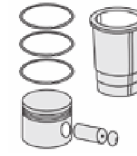
**Silindir Gömleği**  
(Liner)

14-457080-00-WH

B : 144.500  
L : 253.000  
D : 153.800  
C : 10.070  
F : 1.000

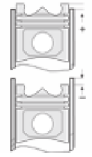


Dış Yüzeyi Krom Kaplı /  
O-RING Bilgi  
(Outer Surface  
Chrome Plated /  
O-RING Information)  
24-35005-00/O  
2x 140\*1,9 FPM  
2x 144\*3,8 FPM



**Silindir Kit**  
(Assembly Set)

89-179300-43-STD  
89-70525-STDB

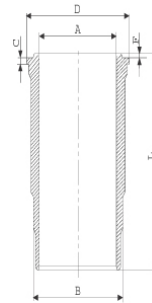


**Piston - Blok Montaj**  
Yüksekliği  
(Piston - Block  
Assembly Height)

- 0,07 / + 0,43

14-452030-00-WH

B : 144.500  
L : 253.000  
D : 153.800  
C : 9.920  
F : 1.000



O-RING Bilgi  
(O-RING Information)  
24-26802-00/O  
2x 144\*3,8 FPM  
1x 140\*1,9 FPM  
1 ADET SHIM

89-179300-14-STD  
89-70525-STDJ





MERCEDES BENZ LKW - Ø 128

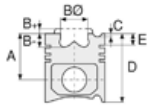
87-70525-STDB



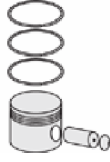
**Motor Özellikleri**  
(Engine Specifications)

**OM 424A**  
12 Sil. Dizel 21927cc  
257/441 Kw  
(350/600 PS) 16,25:1  
Turbo  
Endüstriyel (Industrial)  
1981....

**OM 424LA**  
12 Sil. Dizel 21927cc  
404/452 Kw  
(549/615 PS) 16,25:1  
Turbocharged Intercool  
1633, 1638, 1933, 1938,  
2633, 2638, 3333  
1981....



**Piston Ölçüleri**  
(Piston Dimensions)



**Piston Parça No**  
(Piston Part No)

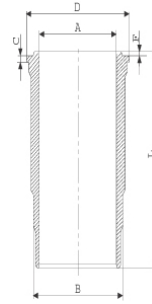


**Segman Seti**  
(Ring Set)

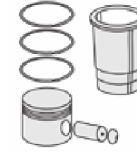


**Silindir Gömleği**  
(Liner)

14-451160-00-WH  
B : 144.500  
L : 253.000  
D : 153.800  
C : 10.070  
F : 1.000

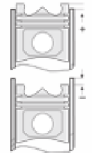


O-RING Bilgi  
(O-RING Information)  
24-35005-00/O  
2x 140\*1,9 FPM  
2x 144\*3,8 FPM



**Silindir Kit**  
(Assembly Set)

89-179300-44-STD  
89-70525-STDH



**Piston - Blok Montaj**  
Yüksekliği  
(Piston - Block  
Assembly Height)

87-181700-53  
87-70525-STDD

06-181700-80-STD  
3.000  CK KV1  
3.000  CK IKA  
4.000  CR STD  
Goetze® LKZ-Ring®

14-457080-00-WH  
Dış Yüzeyi Krom Kaplı /  
O-RING Bilgi  
(Outer Surface  
Chrome Plated /  
O-RING Information)  
24-35005-00/O  
2x 140\*1,9 FPM  
2x 144\*3,8 FPM

89-181700-53-STD  
89-70525-STDD



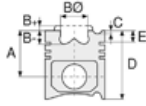


MERCEDES BENZ LKW - Ø 128

87-70525-STDB



Motor Özellikleri  
(Engine Specifications)



Piston Ölçüleri  
(Piston Dimensions)



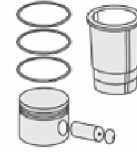
Piston Parça No  
(Piston Part No)



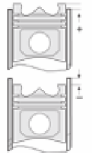
Segman Seti  
(Ring Set)



Silindir Gömleği  
(Liner)



Silindir Kit  
(Assembly Set)



Piston - Blok Montaj  
Yüksekliği  
(Piston - Block  
Assembly Height)

**ANA YATAK**  
(MAIN BEARING)



H821/4 STD

**KOL YATAK**  
(ARM BED)

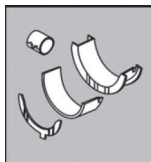


71-3638 STD

71-3289/2 STD

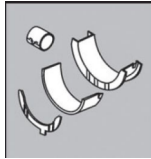
71-2965 STD

**EKSANTRİK YATAK**  
(ECCENTRIC BEARING)



N110/5L STD

**KOL BURCU**  
(SMALL END BUSH)



55-3328 SEMI

**SİL. KAPAK. CONTA**  
(CYLINDER HEAD GASKET)



30-024941-30

30-026235-10

30-026235-30



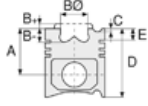


MERCEDES BENZ LKW - Ø 128

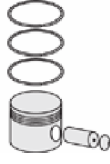
87-70525-STDB



Motor Özellikleri  
(Engine Specifications)



Piston Ölçüleri  
(Piston Dimensions)



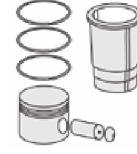
Piston Parça No  
(Piston Part No)



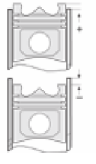
Segman Seti  
(Ring Set)



Silindir Gömleği  
(Liner)



Silindir Kit  
(Assembly Set)



Piston - Blok Montaj  
Yüksekliği  
(Piston - Block  
Assembly Height)

ÜST BÖLÜM TAKIM CONTA  
(UPPER PART KIT GASKET)



21-26235-26/0

ALT BÖLÜM TAKIM CONTA  
(LOWER SECTION KIT GASKET)



22-23578-04/0

FULL TAKIM CONTA  
(FULL SET GASKET)



20-26235-42/0

