



Motor Özellikleri
(Engine Specifications)

İmalatçı (Manufacturer):
MERCEDES BENZ LKW
Çap (Diameter): Ø 128
FM Grup No: 5964

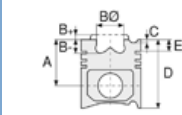
OM 441A.950/953
6 Sil. Dizel 10960cc
200 Kw (272 PS) 16,25:1
Turbo
Endüstriyel (Industrial)
1991....

**OM 441LA.951/
960-62/981-83/985**
6 Sil. Dizel 10960cc
249 Kw (340 PS)
Turbocharged Intercool
1622, 1628, 1733,
2222, 2433
1991....

**OM 442A.900/941/
946/950/952/
954/968**
8 Sil. Dizel 14618cc
269 Kw (366 PS)
Turbo
1635, 1735, 1935, 2035,
2235, 2435, 2535, 2635,
3235, 3335, 3535, O 303
1991....

**OM 442LA.980/
982/983**
8 Sil. Dizel 14618cc
320 Kw (435 PS)
Turbocharged Intercool
1644, 1748, 1844, 1944,
2044, 2244, 2544, 2644
1991....

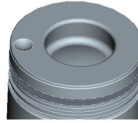
OM 443A.901/940
10 Sil. Dizel 18267cc
340 Kw (462 PS)
Turbo Motor No 622824-->
Endüstriyel (Industrial)
1991....



Piston Ölçüleri
(Piston Dimensions)

A : 81.450
B- : 27.500
BØ : 66.600
BX : 3.000
BY : 1.500
D : 126.450
E : 18.000

Pim: 46 x 105



Piston Özellikleri
(Piston Features)

Segman Taşıyıcı
(Ring Carrier)
Sert Anotlama
(Hard Anodizing)
Soğutma Kanallı
(Coolin Gallery)
Yağ Püskürtme Oyuğu
(Oil Jet Cut-out)
Gözarası Konik
(Conical Eye Gap)



Piston Parça No
(Piston Part No)

87-179300-64
87-70527-STD1A
0,20 mm Kısa (Short)

87-179300-63
87-70527-STDA



Segman Seti
(Ring Set)

06-179300-20-STD

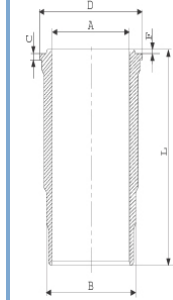
3.000 PS ST
3.000 CR IKA
4.000 CR STD

Goetze® LKZ-Ring®

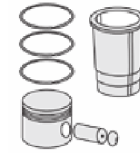


Silindir Gömleği
(Liner)

14-457080-00-WH
B : 144.500
L : 253.000
D : 153.800
C : 10.070
F : 1.000

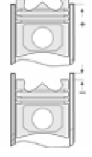


Dış Yüzeyi Krom Kaplı /
O-RING Bilgi
(Outer Surface
Chrome Plated /
O-RING Information)
24-35005-00/O
2x 140*1,9 FPM
2x 144*3,8 FPM



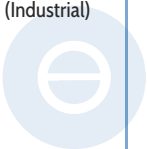
Silindir Kit
(Assembly Set)

89-179300-63-STD
89-70527-STDA



Piston - Blok Montaj
Yüksekliği
(Piston - Block
Assembly Height)

+ 0,17 / + 0,53





MERCEDES BENZ LKW - Ø 128

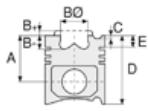
87-70527-STD A



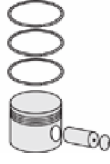
Motor Özellikleri
(Engine Specifications)

OM 443LA.901/980
10 Sil. Dizel 18267cc
412 Kw (560 PS)
Turbocharged Intercool
Motor No 622824-->
Endüstriyel (Industrial)
1991....

OM 444A
12 Sil. Dizel
Endüstriyel (Industrial)



Piston Ölçüleri
(Piston Dimensions)



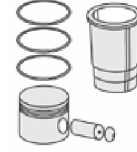
Piston Parça No
(Piston Part No)



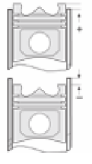
Segman Seti
(Ring Set)



Silindir Gömleği
(Liner)



Silindir Kit
(Assembly Set)



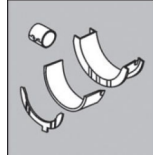
Piston - Blok Montaj
Yüksekliği
(Piston - Block
Assembly Height)

ANA YATAK
(MAIN BEARING)



H821/4 STD

KOL YATAK
(ARM BED)

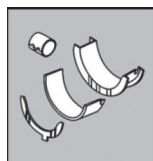


71-2965 STD

71-3693/6 STD

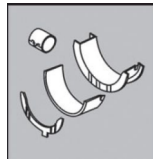
71-3693 STD

EKSANTRİK YATAK
(ECCENTRIC BEARING)



N110/4L STD

KOL BURCU
(SMALL END BUSH)



55-3328 SEMI

SİL. KAPAK. CONTA
(CYLINDER HEAD GASKET)

30-024941-30



30-026235-10

30-026235-30

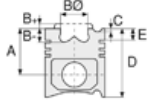


MERCEDES BENZ LKW - Ø 128

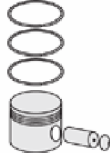
87-70527-STDA



Motor Özellikleri
(Engine Specifications)



Piston Ölçüleri
(Piston Dimensions)



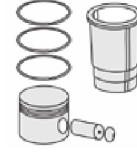
Piston Parça No
(Piston Part No)



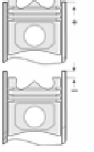
Segman Seti
(Ring Set)



Silindir Gömleği
(Liner)



Silindir Kit
(Assembly Set)



Piston - Blok Montaj
Yüksekliği
(Piston - Block
Assembly Height)

ÜST BÖLÜM TAKIM CONTA
(UPPER PART KIT GASKET)



21-26235-26/0

ALT BÖLÜM TAKIM CONTA
(LOWER SECTION KIT GASKET)



22-23576-03/0

FULL TAKIM CONTA
(FULL SET GASKET)



20-26235-41/0