



Motor Özellikleri
(Engine Specifications)

İmalatçı (Manufacturer):
MERCEDES BENZ LKW
Çap (Diameter): Ø 128
FM Grup No: 5965

**OM 441A.950/
953/955**

6 Sil. Dizel 10960cc
200 Kw (272 PS) 16,25:1
Turbo
O 303
1989 - 1991

**OM 441 LA.951/
960-962/980-983**

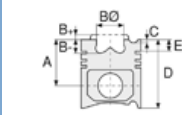
6 Sil. Dizel 10960cc
243/249 Kw
(330/340 PS) 16,25:1
Turbocharged Intercool
1234, 1622, 1628, 1733,
1834, 2433, 2534
1985 - 1991

**OM 442A.941-946/
950/954-968**

8 Sil. Dizel 14618cc
269 Kw (366 PS) 16,25:1
Turbo
1735, 2235, 2435, 2535,
2635, 3335, O 303
1985 - 1991

**OM 442 LA.951/
953/980/982/
983/985**

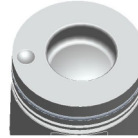
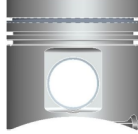
8 Sil. Dizel 14618cc
320/362 Kw
(435/492 PS) 16,25:1
Turbocharged Intercool
1644, 1748, 1844, 1944,
2044, 2244, 2448, 2544,
2644, 3548
1985 - 1991



Piston Ölçüleri
(Piston Dimensions)

A : 81.350
B - : 27.500
BØ : 66.600
BX : 3.000
BY : 1.500
D : 126.350
E : 17.900

Pim: 46 x 105



Piston Özellikleri
(Piston Features)

Segman Taşıyıcı
(Ring Carrier)
Sert Anotlama
(Hard Anodizing)
Soğutma Kanallı
(Coolin Gallery)
Yağ Püskürtme Oyuğu
(Oil Jet Cut-out)
Burçlu Piston
(Bushing Piston)
Gözarası Düz
(Flat Eye Gap)



Piston Parça No
(Piston Part No)

87-179300-72
87-70529-STD
87-179300-73
87-70529-STD1
0,30 mm Kısa (Short)



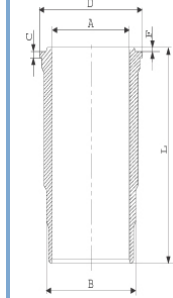
Segman Seti
(Ring Set)

06-179300-20-STD
3.000 PS ST
3.000 CR IKA
4.000 CR STD
Goetze® LKZ-Ring®

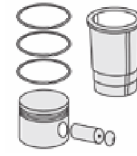


Silindir Gömleği
(Liner)

14-452030-00-WH
B : 144.500
L : 253.000
D : 153.800
C : 9.920
F : 1.000

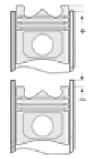


O-RING Bilgi
(O-RING Information)
24-26802-00/O
2x 144*3,8 FPM
1x 140*1,9 FPM
1 ADET SHIM



Silindir Kit
(Assembly Set)

89-179300-72-STD
89-70529-STD



Piston - Blok Montaj
Yüksekliği
(Piston - Block
Assembly Height)

- 0,10 / + 0,32





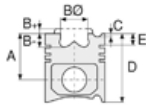
Motor Özellikleri
(Engine Specifications)

OM 443A.901/940
10 Sil. Dizel 18267cc
340 Kw (462 PS) 16,25:1
Turbo Motor No -->622823
Endüstriyel (Industrial)
1989 - 1991

OM 443LA.901/980
10 Sil. Dizel 18267cc
412 Kw (560 PS) 16,25:1
Turbocharged Intercool
Motor No -->622823
Endüstriyel (Industrial)
1989 - 1991

OM 444A.901
12 Sil. Dizel 21920cc
16,25:1
Turbo Motor No -->012920
Endüstriyel (Industrial)
1989 - 1991

**OM 444LA.901-
500-502/508**
12 Sil. Dizel 21920cc 16,25:1
Turbocharged Intercool
Motor No -->012920
Endüstriyel (Industrial)
1989 - 1991



Piston Ölçüleri
(Piston Dimensions)



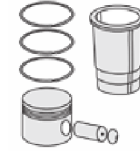
Piston Parça No
(Piston Part No)



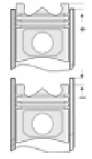
Segman Seti
(Ring Set)



Silindir Gömleği
(Liner)



Silindir Kit
(Assembly Set)



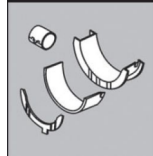
Piston - Blok Montaj
Yüksekliği
(Piston - Block
Assembly Height)

ANA YATAK
(MAIN BEARING)



H821/4 STD

KOL YATAK
(ARM BED)

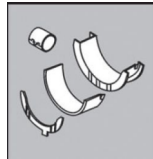


71-2965 STD

71-3693/6 STD

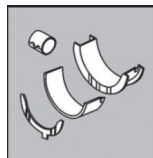
71-3693 STD

EKSANTRİK YATAK
(ECCENTRIC BEARING)



N110/4L STD

KOL BURCU
(SMALL END BUSH)



55-3328 SEMI

SİL. KAPAK. CONTA
(CYLINDER HEAD GASKET)

30-024941-30

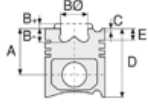
30-026235-10

30-026235-30





Motor Özellikleri
(Engine Specifications)



Piston Ölçüleri
(Piston Dimensions)



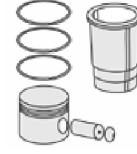
Piston Parça No
(Piston Part No)



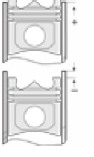
Segman Seti
(Ring Set)



Silindir Gömleği
(Liner)



Silindir Kit
(Assembly Set)



Piston - Blok Montaj
Yüksekliği
(Piston - Block
Assembly Height)

ÜST BÖLÜM TAKIM CONTA
(UPPER PART KIT GASKET)



21-26235-26/0

ALT BÖLÜM TAKIM CONTA
(LOWER SECTION KIT GASKET)



22-22812-04/0

FULL TAKIM CONTA
(FULL SET GASKET)



20-26235-42/0

