



Motor Özellikleri
(Engine Specifications)

İmalatçı (Manufacturer):
MERCEDES BENZ LKW
Çap (Diameter): Ø 130
FM Grup No: 5967

OM 501LA EURO2

6 Sil. Dizel 11940cc
230-315 Kw (313-428 PS)
17, 25:1 Turbocharged
Intercool 24v 1831, 1835,
1839, 1840 ACTROS,
1843, 2531, 2535 ACTROS,
2539 ACTROS,
2543 ACTROS
1996...

OM 541 LA 920-927

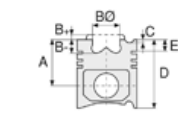
Euro2
6 Sil. Dizel 11946cc 230,
260,290,315 Kw (313,354,
394,428 PS) 17, 25:1
Turbo,Intercool, 24v
1831 ACTROS,
1835 ACTROS,
1839 ACTROS,
1840 ACTROS,
1843 ACTROS,
2531 ACTROS,
2535 ACTROS,
2539 ACTROS,
2543 ACTROS
1996...

OM 502 LA Euro2

8 Sil. Dizel 15920cc
350-390 Kw (476-530 PS)
17, 25:1 Turbo,Intercool 24v
1848, 1853, 2548, 2553
1996...

**OM 542 LA 920-922,
925 Euro2**

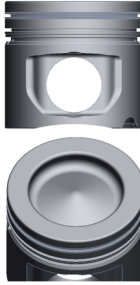
8 Sil. Dizel 15928cc
350-390-420 Kw
(476-530-570 PS) 17, 25:1
1848, 1853, 2548, 2553
1996...



Piston Ölçüleri
(Piston Dimensions)

A : 78.550
B - : 18.200
BØ : 88.500
D : 119.550
E : 12.000

Pim : 52 x 103



Piston Özellikleri
(Piston Features)

Segman Taşıyıcı
(Ring Carrier)
Soğutma Kanallı
(Cooling Gallery)
Yağ Püskürtme Oyuğu
(Oil Jet Cut-Out)
Gözarası Konik
(Conical Eye Gap)



Piston Parça No
(Piston Part No)

87-136000-23
87-70530-STD1A
0,20 mm Kısa (Short)

87-136000-22
87-70530-STDA



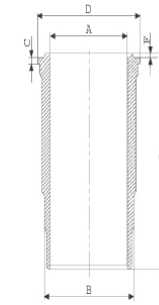
Segman Seti
(Ring Set)

06-136000-20-STD
3.000 CK ST
3.000 CR GOE
4.000 CK KV1
Goetze® LKZ-Ring®
Yağ Segmanı Matkap Delik
(Oil Ring Drill Hole)

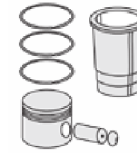


Silindir Gömleği
(Liner)

14-458580-00-WH
B : 150.000
L : 258.000
D : 164.100
C : 10.120
F : 1.100

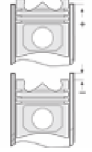


Flanş Altı Su Kanalı
Dörtgen Kesit
(Under Flange
Water Channel
Rectangular Section) /
O-RING BİLGİ
(O-ring Information)
24-28574-00/O
2x 149*158,6*7 FPM
1 ADET (Piece) SHIM



Silindir Kit
(Assembly Set)

89-136000-22-STD
89-70530-STDA



Piston - Blok Montaj
Yüksekliği
(Piston - Block
Assembly Height)

+ 0,27 / + 0,61

87-289600-22
87-70530-STDD

06-289600-20-STD
3.000 CR ST
3.000 CR IKA
4.000 CR STD
Goetze® LKZ-Ring®

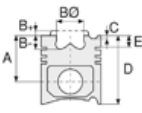
14-458580-00-WH
Flanş Altı Su Kanalı
Dörtgen Kesit
(Under Flange
Water Channel
Rectangular Section) /
O-RING BİLGİ
(O-ring Information)
24-28574-00/O
2x 149*158,6*7 FPM
1 ADET (Piece) SHIM

89-289600-02-STD
89-70530-STDD





Motor Özellikleri
(Engine Specifications)



Piston Ölçüleri
(Piston Dimensions)



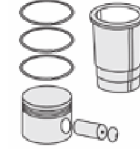
Piston Parça No
(Piston Part No)



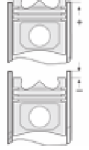
Segman Seti
(Ring Set)



Silindir Gömleği
(Liner)



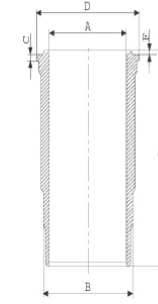
Silindir Kit
(Assembly Set)



Piston - Blok Montaj
Yüksekliği
(Piston - Block
Assembly Height)

14-450450-00-WH
B : 150.000
L : 258.000
D : 164.100
C : 10.120
F : 1.100

89-289600-32-STD
89-70530-STDC



Flanş Altı Su Kanalı
Yuvarlak Kesit
(Under Flange
Water Channel
Round Section)

87-864800-22
87-70530-STDF

06-864800-20
Goetze® LKZ-Ring®
Yağ Segmanı Matkap Delik
(Oil Ring Drill Hole)

14-458580-00-WH
Flanş Altı Su Kanalı
Dörtgen Kesit
(Under Flange
Water Channel
Rectangular Section) /
O-RING BİLGİ
(O-ring Information)
24-28574-00/O
2x 149*158,6*7 FPM
1 ADET (Piece) SHIM

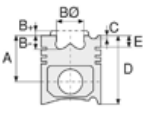
88-864800-22-STD
88-70530-STDF

14-451390-00-WH
B : 150.000
L : 258.000
D : 164.100
C : 10.120
F : 1.100
O-RİNG BİLGİ
(O-ring Information) /
Kurum Giderme Ringli
(With Scraper Rings)
24-28574-00/O
2x 149*158,6*7 FPM
1 ADET (Piece) SHIM





Motor Özellikleri
(Engine Specifications)



Piston Ölçüleri
(Piston Dimensions)



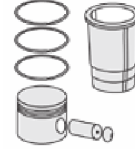
Piston Parça No
(Piston Part No)



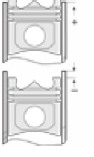
Segman Seti
(Ring Set)



Silindir Gömleği
(Liner)

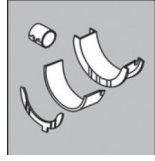


Silindir Kit
(Assembly Set)



Piston - Blok Montaj
Yüksekliği
(Piston - Block
Assembly Height)

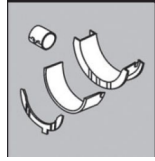
**ANA YATAK
(MAIN BED)**



H-063/4-STD

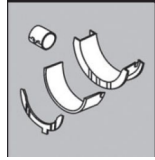
72-3837 STD

**KOL YATAK
(ARM BED)**



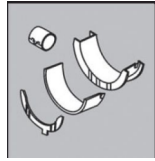
71-3835-STD

**EKSANTRİK YATAK
(ECCENTRIC BEARING)**



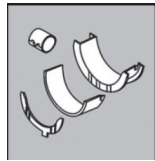
N20/4 SEMI

**AY YATAK
(THRUST WASHER)**



A150/4 STD

**KOL BURCU
(SMALL END BUSH)**



56-3839 SEMI

**SİL. KAPAK. CONTA
(CYLINDER HEAD GASKET)**

30-028700-00

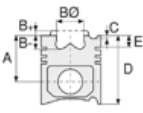
30-030172-00

AG8280

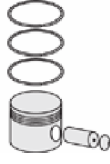




Motor Özellikleri
(Engine Specifications)



Piston Ölçüleri
(Piston Dimensions)



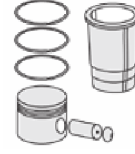
Piston Parça No
(Piston Part No)



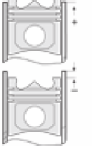
Segman Seti
(Ring Set)



Silindir Gömleği
(Liner)



Silindir Kit
(Assembly Set)



Piston - Blok Montaj
Yüksekliği
(Piston - Block
Assembly Height)

SİL. KAPAK. CONTA
(CYLINDER HEAD GASKET)



21-26235-26/0

ÜST BÖLÜM TAKIM CONTA
(UPPER PART KIT GASKET)



22-23576-03/0

ALT BÖLÜM TAKIM CONTA
(LOWER SECTION KIT GASKET)



20-26235-41/0

