



Motor Özellikleri
(Engine Specifications)

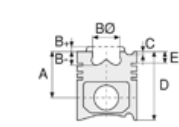
İmalatçı (Manufacturer):
MERCEDES BENZ LKW
Çap (Diameter): Ø 128
FM Grup No: 5966

OM 447HA/HLA
EURO1

6 Sil. Dizel 11970cc
184/220 Kw
(250/300 PS) 18:1
Turbocharged Intercool
O 405, O 407, O 408
1993....

OM 449LA EURO1

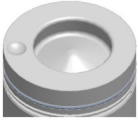
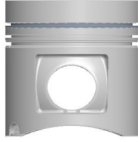
8 Sil. Dizel 9975cc
184/220 Kw
(250/300 PS) 18:1
Turbocharged Intercool
Endüstriyel (Industrial)
1992....



Piston Ölçüleri
(Piston Dimensions)

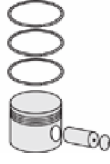
A : 90.000
B- : 24.000
BØ : 75.000
BX : 2.800
BY : 1.500
D : 140.000
E : 23.100

Pim: 46 x 105



Piston Özellikleri
(Piston Features)

Segman Taşıyıcı
(Ring Carrier)
Sert Anotlama
(Hard Anodizing)
Yağ Püskürtme Oyuğu
(Oil Jet Cut-out)
Gözarası Konik
(Conical Eye Gap)



Piston Parça No
(Piston Part No)

87-179300-83
87-70531-STD A



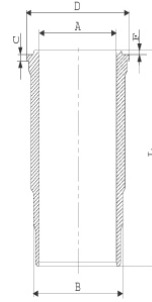
Segman Seti
(Ring Set)

06-179300-20-STD
3.000 PS ST
3.000 CR IKA
4.000 CR STD
Goetze® LKZ-Ring®

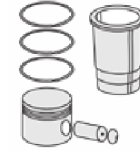


Silindir Gömleği
(Liner)

14-459510-00-WH
B : 144.500
L : 270.000
D : 153.800
C : 9.920
F : 1.000

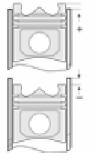


O-RING Bilgi
(O-RING Information)
24-26802-00/0
1x 140*1,9 FPM
2x 144*3,8 FPM
1 ADET SHIM



Silindir Kit
(Assembly Set)

89-179300-83-STD
89-70531-STD A



Piston - Blok Montaj
Yüksekliği
(Piston - Block
Assembly Height)





Motor Özellikleri
(Engine Specifications)



Piston Ölçüleri
(Piston Dimensions)



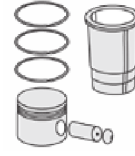
Piston Parça No
(Piston Part No)



Segman Seti
(Ring Set)



Silindir Gömleği
(Liner)



Silindir Kit
(Assembly Set)



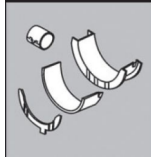
Piston - Blok Montaj
Yüksekliği
(Piston - Block
Assembly Height)

**ANA YATAK
(MAIN BEARING)**



H992/7 STD

**KOL YATAK
(ARM BED)**



71-2965 STD

71-3561/6 STD

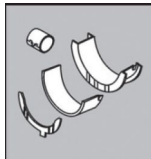
71-3637 STD

**EKSANTRİK YATAK
(ECCENTRIC BEARING)**



N109/7L STD

**KOL BURCU
(SMALL END BUSH)**



55-3328 SEMI

**SİL. KAPAK. CONTA
(CYLINDER HEAD GASKET)**



30-024941-30

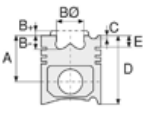
30-026235-10

30-026235-30





Motor Özellikleri
(Engine Specifications)



Piston Ölçüleri
(Piston Dimensions)



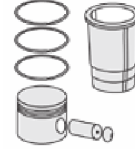
Piston Parça No
(Piston Part No)



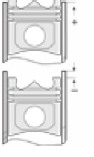
Segman Seti
(Ring Set)



Silindir Gömleği
(Liner)



Silindir Kit
(Assembly Set)



Piston - Blok Montaj
Yüksekliği
(Piston - Block
Assembly Height)

ÜST BÖLÜM TAKIM CONTA
(UPPER PART KIT GASKET)



21-26235-25/0

ALT BÖLÜM TAKIM CONTA
(LOWER SECTION KIT GASKET)



22-23336-50/0

FULL TAKIM CONTA
(FULL SET GASKET)



20-26235-47/0

