



**Motor Özellikleri**  
(Engine Specifications)

İmalatçı (Manufacturer):  
MERCEDES BENZ LKW  
Çap (Diameter): Ø 130  
FM Grup No: 5968

**OM 441.905-909/  
911-920**

6 Sil. Dizel 11309cc  
150/165 Kw  
(204/224 PS) 17, 2:1  
Motor No: 512444  
1622, 1722, 1922,  
2222, 2422, O 303  
1988...

**OM 442**

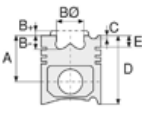
8 Sil. Dizel 15080cc  
218 Kw (296 PS) 16, 9:1  
Motor No 512444  
1225, 1226, 1628, 1726,  
1729, 1928, 2228, 2429,  
3239, O 303, O 4040  
1988...

**OM 443.905**

10 Sil. Dizel 18848cc  
265 Kw (360 PS)  
Motor No: 512444  
ENDUSTRIYEL (Industrial)  
1988...

**OM 444**

12 Sil. Dizel 22618cc  
Motor No: 512444  
ENDUSTRIYEL (Industrial)  
1988...



**Piston Ölçüleri**  
(Piston Dimensions)

A : 81.350  
B- : 27.200  
BØ : 60.700  
BX : 3.000  
BY : 1.500  
D : 126.350  
E : 21.200

Pim : 46 x 99



**Piston Özellikleri**  
(Piston Features)

Segman Taşıyıcı  
(Ring Carrier)  
Sert Anotlama  
(Hard Anodizing)  
Soğutma Kanallı  
(Cooling Gallery)  
Yağ Püskürtme Oyuğu  
(Oil Jet Cut-Out)  
Göz Arası Konik  
(Conical Eye Gap)



**Piston Parça No**  
(Piston Part No)

87-743200-32  
87-70533-STDB



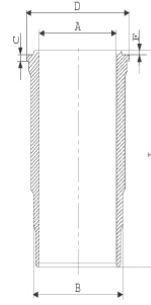
**Segman Seti**  
(Ring Set)

06-743200-80-STD  
3.000 CK KV1  
3.000 CR IKA  
4.000 CR STD  
Goetze® LKZ-Ring®

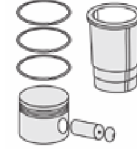


**Silindir Gömleği**  
(Liner)

14-459270-00-WH  
B : 144.500  
L : 253.000  
D : 153.800  
C : 9.920  
F : 1.000

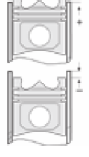


O-RING BİLGİ  
(O-ring Information)  
24-26802-00/O  
1x 140\*1,9 FPM  
2x 144\*3,8 FPM  
1 ADET (Piece) SHIM



**Silindir Kit**  
(Assembly Set)

89-743200-32-STD  
89-70533-STDB



**Piston - Blok Montaj**  
Yüksekliği  
(Piston - Block  
Assembly Height)

+ 0,07 / + 0,43





Motor Özellikleri  
(Engine Specifications)



Piston Ölçüleri  
(Piston Dimensions)



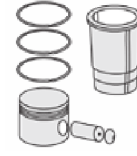
Piston Parça No  
(Piston Part No)



Segman Seti  
(Ring Set)



Silindir Gömleği  
(Liner)



Silindir Kit  
(Assembly Set)



Piston - Blok Montaj  
Yüksekliği  
(Piston - Block  
Assembly Height)

**ANA YATAK**  
(MAIN BED)



H821/4 STD

**KOL YATAK**  
(ARM BED)

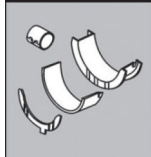


71-3289/2 STD

71-3009 STD

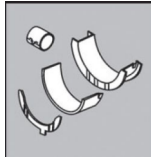
71-2965 STD

**EKSANTRİK YATAK**  
(ECCENTRIC BEARING)



N110/4L STD

**KOL BURCU**  
(SMALL END BUSH)



55-3328 SEMI

**SİL. KAPAK. CONTA**  
(CYLINDER HEAD GASKET)

30-024941-30

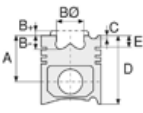
30-026235-10

30-026235-30

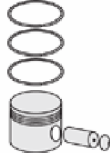




Motor Özellikleri  
(Engine Specifications)



Piston Ölçüleri  
(Piston Dimensions)



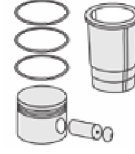
Piston Parça No  
(Piston Part No)



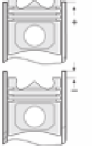
Segman Seti  
(Ring Set)



Silindir Gömleği  
(Liner)



Silindir Kit  
(Assembly Set)



Piston - Blok Montaj  
Yüksekliği  
(Piston - Block  
Assembly Height)

ÜST BÖLÜM TAKIM CONTA  
(UPPER PART KIT GASKET)



21-26235-26/0

ALT BÖLÜM TAKIM CONTA  
(LOWER SECTION KIT GASKET)



22-23576-03/0

FULL TAKIM CONTA  
(FULL SET GASKET)



20-26235-41/0

