

**Motor Özellikleri**  
(Engine Specifications)

İmalatçı (Manufacturer):  
MERCEDES BENZ LKW  
Çap (Diameter): Ø 130  
FM Grup No: 59010

**OM 501 LA EURO3**

6 Sil. Dizel 11946cc  
230-335 Kw (320-456)  
17, 25:1 Turbo intercool  
ACTROS 1841,  
ACTROS 1843,  
ACTROS 1844,  
ACTROS 1846 LS  
2003...

**OM 502 LA EURO3**

8 Sil. Dizel 15928cc  
350-425 Kw (476-578 PS)  
17, 25:1 Turbo intercool  
ACTROS 1850 LS,  
ACTROS 1854 LS  
2003...

**OM 502 LA EURO3**

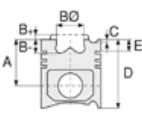
6 Sil. Dizel 15930cc  
350-425 Kw (476-578 PS)  
17, 25:1 Turbo, Intercool,  
TRAVEGO ( SETRA) V8  
TRAVEGO 17 SHD  
2006...

**OM 521 LA.940 Euro 2**

6 Sil. Dizel 11946cc 315  
Kw (428 PS) 17,25:1 4v  
Turbo, Intercooler  
Motor No: 218127 Actros  
1996 - 2000

**OM 521 LA.940 Euro 3**

6 Sil. Dizel 11946cc 315  
Kw (428 PS) 17,77:1 4v  
Turbo, Intercooler  
Motor No: 218127 Actros  
2000...



**Piston Ölçüleri**  
(Piston Dimensions)

A : 78.350  
B - : 16.250  
BØ : 92.800  
D : 119.350  
E : 12.000

Pim : 52 x 103



**Piston Özellikleri**  
(Piston Features)

Segman Taşıyıcı  
(Ring Carrier)  
Soğutma Kanallı  
(Cooling Gallery)  
Yağ Püskürtme Oyuğu  
(Oil Jet Cut-Out)  
Burçlu Piston  
(Bushing Piston)  
Gözarası Konik  
(Conical Eye Gap)



**Piston Parça No**  
(Piston Part No)

87-136000-12  
87-70534-STD A  
87-136000-13  
87-70534-STD1 A  
0,20 mm kısa (Short)



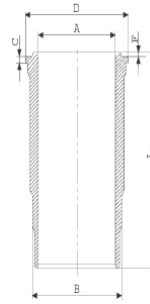
**Segman Seti**  
(Ring Set)

06-136000-20-STD  
3.000 CK ST  
3.000 CR GOE  
4.000 KV1  
Goetze® LKZ-Ring® /  
Yağ Segmanı Matkap Delik  
(Oil Ring Drill Hole)

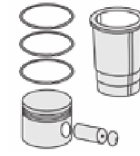


**Silindir Gömleği**  
(Liner)

14-458580-00-WH  
B : 150.000  
L : 258.000  
D : 164.100  
C : 10.120  
F : 1.100

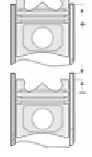


Flaş Altı Su Kanalı  
Dörtgen Kesit  
(Under Flange  
Water Channel  
Rectangular Section)/  
O-RING BİLGİ  
(O-ring Information)  
24-28574-00/O  
2x 149\*158,6\*7 FPM  
1 ADET (Piece) SHIM



**Silindir Kit**  
(Assembly Set)

89-136000-12-STD  
89-70534-STD A



**Piston - Blok Montaj**  
Yüksekliği  
(Piston - Block  
Assembly Height)

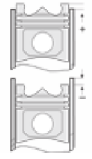
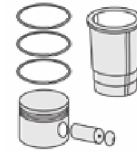
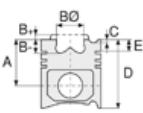
+0,27 / + 0,61

14-451390-00-WH  
B : 150.000  
L : 258.000  
D : 164.100  
C : 10.120  
F : 1.100

89-136000-42-STD  
89-70534-STD B

O-RİNG BİLGİ  
(O-ring Information) /  
Kurum Giderme Ringli  
(With Scraper Rings)  
24-28574-00/O  
2x 149\*158,6\*7 FPM  
1 ADET (Piece) SHIM





**Motor Özellikleri**  
(Engine Specifications)

**Piston Ölçüleri**  
(Piston Dimensions)

**Piston Parça No**  
(Piston Part No)

**Segman Seti**  
(Ring Set)

**Silindir Gömleği**  
(Liner)

**Silindir Kit**  
(Assembly Set)

**Piston - Blok Montaj**  
Yüksekliği  
(Piston - Block  
Assembly Height)

**OM 541 LA 920-927**

**Euro2**

6 Sil. Dizel 11946cc  
230 Kw (313 Ps ) 17, 25:1 4v  
Turbo, Intercooler  
Motor No: 000091058  
1832, 2031, 2032,  
2531 ACTROS, 2532, 2631,  
3231, 3331, Actros 1831  
1996...

**OM 541 LA.920/928/  
940/947 Euro 3**

6 Sil. Dizel 11946cc  
230-260-290-315  
Kw (313-354-394-428 Ps )  
17, 75:1 4v Turbo, Intercooler  
Motor No: 218127 1835,  
1839, 1843, 2031, 2032,  
2531, 2535, 2539, 2543,  
3331, Actros 1831  
2000...

**OM 542 LA 920-922,  
925 Euro2**

8 Sil. Dizel 15928cc  
350-390-420-448  
Kw (476-530-571-609 Ps )  
17,75:1 4v Turbo, Intercooler  
Motor No: 094641 1853,  
1857, 2548, 2553,  
Actros 1848  
2000...

**OM 541 LA.941/910/  
921/923/924 Euro 3**

6 Sil. Dizel 11946cc  
230-260 Kw (313-354 Ps)  
Turbo, Intercooler  
Motor No: 218127 Actros  
2000...

87-864800-02  
87-70534-STD C

06-864800-20  
Goetze® LKZ-Ring® /  
Yağ Segmanı Matkap Delik  
(Oil Ring Drill Hole)

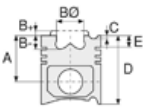
14-458580-00-WH  
Flanş Altı Su Kanalı  
Dörtgen Kesit  
(Under Flange  
Water Channel  
Rectangular Section) /  
O-RING BİLGİ  
(O-ring Information)  
24-28574-00/O  
2x 149\*158,6\*7 FPM  
1 ADET (Piece) SHIM

89-864800-02-STD  
89-70534-STD C

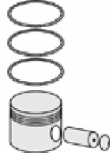




Motor Özellikleri  
(Engine Specifications)



Piston Ölçüleri  
(Piston Dimensions)



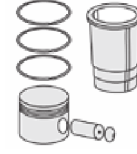
Piston Parça No  
(Piston Part No)



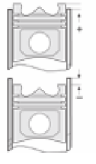
Segman Seti  
(Ring Set)



Silindir Gömleği  
(Liner)

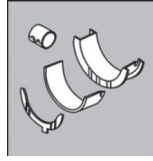


Silindir Kit  
(Assembly Set)



Piston - Blok Montaj  
Yüksekliği  
(Piston - Block  
Assembly Height)

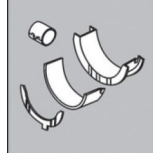
**ANA YATAK**  
(MAIN BEARING)



H063/4 STD

72-3837 STD

**KOL YATAK**  
(ARM BED)



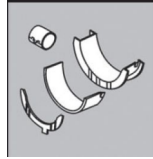
71-3835 STD

**EKSANTRİK YATAK**  
(ECCENTRIC BEARING)



N20/4 SEMI

**AY YATAK**  
(THRUST WASHER)



A150/4 STD

**KOL BURCU**  
(SMALL END BUSH)



56-3839 SEMI

**SİL. KAPAK. CONTA**  
(CYLINDER HEAD GASKET)

30-028700-00

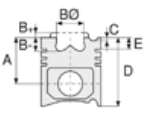
30-030172-00

AG8280

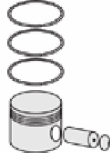




Motor Özellikleri  
(Engine Specifications)



Piston Ölçüleri  
(Piston Dimensions)



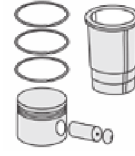
Piston Parça No  
(Piston Part No)



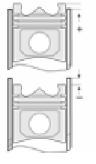
Segman Seti  
(Ring Set)



Silindir Gömleği  
(Liner)



Silindir Kit  
(Assembly Set)



Piston - Blok Montaj  
Yüksekliği  
(Piston - Block  
Assembly Height)

ÜST BÖLÜM TAKIM CONTA  
(UPPER PART KIT GASKET)



21-28700-50/0

ALT BÖLÜM TAKIM CONTA  
(LOWER SECTION KIT GASKET)



22-28700-01/0

