



Motor Özellikleri
(Engine Specifications)

İmalatçı (Manufacturer):
LAND ROVER
Çap (Diameter): Ø 90,475
FM Grup No: 4902

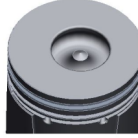
300 TDi

4 Sil. Dizel 2495cc
111 PS 19,5:1
Turbo, Direkt Enjeksiyon
(Direct Injection)
DEFENDER 110,
DEFENDER 130,
DEFENDER 90,
DISCOVERY 2,5 ES,
DISCOVERY 2,5 XS,
RANGE ROVER VOGUE
CLASSIC SE, VOGUE SE
1994....

Piston Ölçüleri
(Piston Dimensions)

A : 55.400
B- : 18.450
BØ : 39.000
BX : 3.300
D : 92.000
E : 8.200

Pim: 30,162 x 77



Piston Özellikleri
(Piston Features)

Segman Taşıyıcı
(Ring Carrier)
Gözarası Konik
(Conical Eye Gap)



Piston Parça No
(Piston Part No)

87-866900-12
87-71411-STD A
87-866907-12
87-71411 020A
87-866911-12
87-71411 040A



Segman Seti
(Ring Set)

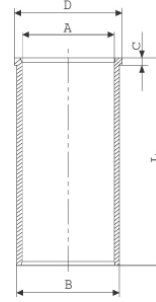
06-866900-90-STD
06-866907-90 0,020"
06-866911-90 0,040"

3.000 CKP KV1
2.500 P F14
3.000 CRP STD

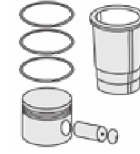
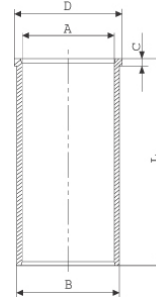


Silindir Gömleği
(Liner)

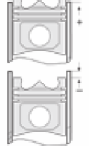
14-022520-00 D
B : 94.550
L : 190.000
D : 95.550
C : 5.000



14-029580-00 D
B : 94.550
L : 190.000
D : 95.550
C : 5.000



Silindir Kit
(Assembly Set)



Piston - Blok Montaj
Yüksekliği
(Piston - Block
Assembly Height)

- 1.Çentik Conta ile
(1.With Notch Gasket)
+0,50 / +0,60
- 2.Çentik Conta ile
(2.With Notch Gasket)
+0,61 / +0,70
- 3.Çentik Conta ile
(3.With Notch Gasket)
+0,71 / +0,80

