



**Motor Özellikleri**  
(Engine Specifications)

İmalatçı (Manufacturer):  
MAN  
Çap (Diameter): Ø 128  
FM Grup No: 5469

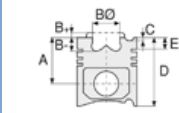
**D 2840 LE 301**  
Dizel 368 KW-500 PS  
1996....

**D 2840 LE 302**  
Dizel 443KW-602PS  
1969....

**D 2840 LE 401**  
10 Sil. Dizel 478  
KW-650 PS  
1994....

**D 2840 LE 403**  
8 Sil. Dizel 773  
KW-1050 HP  
1995....

**D 2840 LE 402**  
12 Sil. Dizel  
441KW-600PS  
1998....



**Piston Ölçüleri**  
(Piston Dimensions)

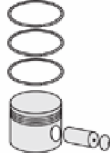
A : 81.250  
B - : 27.200  
BØ : 76.000  
C1 : 1.300  
D : 130.300  
E : 18.800

Pim: 46 x 105



**Piston Özellikleri**  
(Piston Features)

Segman Taşıyıcı  
(Ring Carrier)  
Soğutma Kanallı  
(Coolin Gallery)  
Yağ Püskürtme Oyuğu  
(Oil Jet Cut-out)  
Burçlu Piston  
(Bushing Piston)  
Gözarası Konik  
(Conical Eye Gap)



**Piston Parça No**  
(Piston Part No)

87-124500-52  
87-71543-STD A



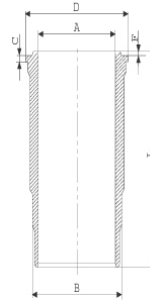
**Segman Seti**  
(Ring Set)

06-124500-20-STD  
4.000 CK KV4  
3.000 GOE  
4.000 CR GOE  
Goetze® LKZ-Ring® /  
Yağ Segmanı Matkap  
Delik (Oil Ring Drill Hole)

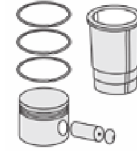


**Silindir Gömleği**  
(Liner)

14-458210-00-WH  
B : 144.500  
L : 253.000  
D : 153.800  
C : 10.050  
F : 1.000

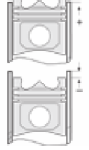


Dış Yüzeyi Fosfat Kaplı /  
O-RING Bilgi  
(Outer Surface  
Phosphate Coated /  
O-RING Information)  
24-32448-70/O  
2x 138\*2,1 FPM  
2x 144\*4 FPM



**Silindir Kit**  
(Assembly Set)

89-124500-52-STD  
89-71543-STD A



**Piston - Blok Montaj**  
Yüksekliği  
(Piston - Block  
Assembly Height)





Motor Özellikleri  
(Engine Specifications)



Piston Ölçüleri  
(Piston Dimensions)



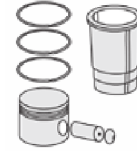
Piston Parça No  
(Piston Part No)



Segman Seti  
(Ring Set)



Silindir Gömleği  
(Liner)

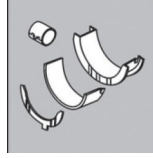


Silindir Kit  
(Assembly Set)



Piston - Blok Montaj  
Yüksekliği  
(Piston - Block  
Assembly Height)

**ANA YATAK  
(MAIN BEARING)**



H993/6 STD

**KOL YATAK  
(ARM BED)**

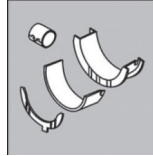


71-3638 STD

71-3289/2 STD

71-2965 STD

**EKSANTRİK YATAK  
(ECCENTRIC BEARING)**



N110/6L STD

**SİL. KAPAK. CONTA  
(CYLINDER HEAD GASKET)**



30-026235-10

**ÜST BÖLÜM TAKIM CONTA  
(UPPER PART KIT GASKET)**



21-26235-23/0

**ALT BÖLÜM TAKIM CONTA  
(LOWER SECTION KIT GASKET)**



22-23351-01/0

**FULL TAKIM CONTA  
(FULL SET GASKET)**



20-26235-19/0

