



MAN - Ø 128

87-71573-STDB



**Motor Özellikleri**  
(Engine Specifications)

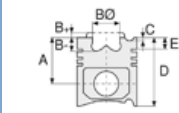
İmalatçı (Manufacturer):  
MAN  
Çap (Diameter): Ø 128  
FM Grup No: 5457

**D2840.LXE, LYE**  
10 Sil. Dizel 18270cc  
603 KW(820 PS) 13,5:1  
TURBO, LLK  
Endüstriyel, Marin  
(Industrial, Marine)  
1987 - 1990

**D2842.LXE, LYE**  
12 Sil. Dizel 21930cc  
735 Kw(1000 PS) 13,5:1  
TURBO, LLK  
Endüstriyel, Marin  
(Industrial, Marine)  
1987 - 1990

**D2848.LXE**  
8 Sil. Dizel 14620cc  
500 KW(680 PS) 13,5:1  
TURBO, LLK  
Endüstriyel, Marin  
(Industrial, Marine)  
1987 - 1990

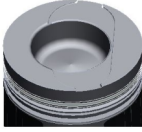
**D2848.LYE**  
8 Sil. Dizel 14618cc  
500 KW(680 PS) 13,5:1  
TURBO, LLK  
Endüstriyel, Marin  
(Industrial, Marine)  
1987 - 1990



**Piston Ölçüleri**  
(Piston Dimensions)

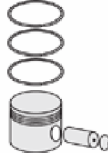
A : 81.300  
B - : 32.000  
BØ : 72.900  
BX : 2.000  
C1 : 1.200  
D : 130.300  
E : 19.000

Pim: 46 x 105



**Piston Özellikleri**  
(Piston Features)

Segman Taşıyıcı  
(Ring Carrier)  
Yağ Püskürtme Oyuğu  
(Oil Jet Cut-out)



**Piston Parça No**  
(Piston Part No)

87-283100-92  
87-71573-STDB



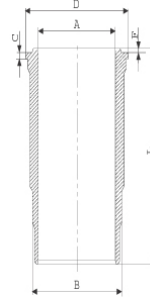
**Segman Seti**  
(Ring Set)

06-283100-40-STD  
3.500 CK KV4  
3.000 STD  
5.000 CR STD



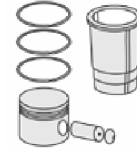
**Silindir Gömleği**  
(Liner)

14-458210-00-WH  
B : 144.500  
L : 253.000  
D : 153.800  
C : 10.050  
F : 1.000



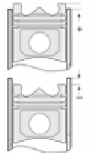
Dış Yüzeyi Fosfat Kaplı /  
O-RING Bilgi  
(Outer Surface  
Phosphate Coated /  
O-RING Information)  
24-32448-70/O  
2x 138\*2,1 FPM  
2x 144\*4 FPM

14-458210-00-WH  
Dış Yüzeyi Fosfat Kaplı /  
O-RING Bilgi  
(Outer Surface  
Phosphate Coated /  
O-RING Information)  
24-32448-70/O  
2x 138\*2,1 FPM  
2x 144\*4 FPM



**Silindir Kit**  
(Assembly Set)

89-283100-92-STD  
89-71573-STDB



**Piston - Blok Montaj**  
Yüksekliği  
(Piston - Block  
Assembly Height)

+0,01 / +0,38





MAN - Ø 128

87-71573-STDB



**Motor Özellikleri**  
(Engine Specifications)



**Piston Ölçüleri**  
(Piston Dimensions)



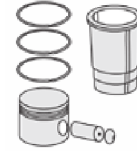
**Piston Parça No**  
(Piston Part No)



**Segman Seti**  
(Ring Set)



**Silindir Gömleği**  
(Liner)

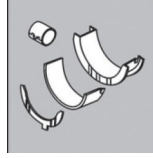


**Silindir Kit**  
(Assembly Set)



**Piston - Blok Montaj**  
Yüksekliği  
(Piston - Block  
Assembly Height)

**ANA YATAK**  
(MAIN BEARING)



H993/6 STD

**KOL YATAK**  
(ARM BED)

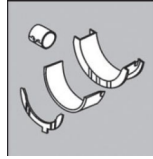


71-3638 STD

71-3289/2 STD

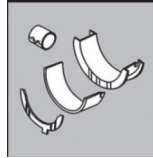
71-2965 STD

**EKSANTRİK YATAK**  
(ECCENTRIC BEARING)



N110/6L STD

**KOL BURCU**  
(SMALL END BUSH)



55-2862 SEMI

**SİL. KAPAK. CONTA**  
(CYLINDER HEAD GASKET)



30-026235-10

**ÜST BÖLÜM TAKIM CONTA**  
(UPPER PART KIT GASKET)



21-26235-23/0

