



MAN - Ø 128

87-71574-STDB



Motor Özellikleri
(Engine Specifications)

İmalatçı (Manufacturer):
MAN
Çap (Diameter): Ø 128
FM Grup No: 5423

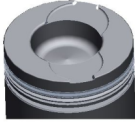
**D 2866 K/KF/KFZ/
LFO4,07,08,29/LFZ**

6 Sil. Dizel 11967cc
215/265 Kw
(292/360 PS) 15:1
Turbo Intercooled
19.291, 19.292, 19.331,
19.332 F, 19.361,
19.361 FLS, 19.362 F,
19.422, 22.230, 22.331,
22.332, 22.360, 22.361,
22.362, 24.292, 24.362,
32.361, 322, 33.361, 332,
34.291, 34.331, 362, 363
1983....

Piston Ölçüleri
(Piston Dimensions)

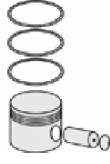
A : 89.800
B - : 32.200
BØ : 69.600
BX : 2.000
C1 : 2.300
D : 141.800
E : 18.800

Pim: 46 x 105



Piston Özellikleri
(Piston Features)

Segman Taşıyıcı
(Ring Carrier)
Yağ Püskürtme Oyuğu
(Oil Jet Cut-out)
Gözarası Konik
(Conical Eye Gap)



Piston Parça No
(Piston Part No)

87-283100-33
87-71574-STD1B
0,20 mm Kısa (Short)

87-283100-34
87-71574-STD2B
0,40 mm Kısa (Short)

87-283100-32
87-71574-STDB



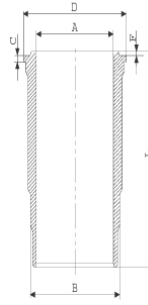
Segman Seti
(Ring Set)

06-283100-40-STD
3.500 CR KV4
3.000 STD
5.000 CR STD

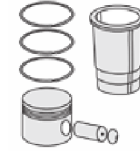


Silindir Gömleği
(Liner)

14-452920-00-WH
B : 144.500
L : 270.000
D : 153.800
C : 10.070
F : 1.000

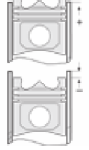


O-RING Bilgi
(O-RING Information)
24-32448-70/O
2x 138*2,1 FPM
2x 144*4 FPM



Silindir Kit
(Assembly Set)

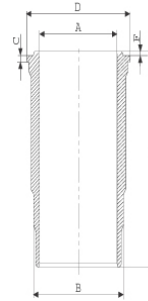
89-283100-32-STD
89-71574-STDB



Piston - Blok Montaj
Yüksekliği
(Piston - Block
Assembly Height)

0/+0,33

14-452930-00-WH
B : 144.500
L : 270.000
D : 153.800
C : 10.570
F : 1.000



Flanş 0,50mm Farklı
(Flange 0,50mm
Different)



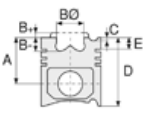


MAN - Ø 128

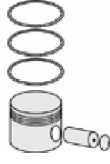
87-71574-STD B



Motor Özellikleri
(Engine Specifications)



Piston Ölçüleri
(Piston Dimensions)



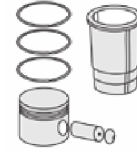
Piston Parça No
(Piston Part No)



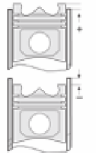
Segman Seti
(Ring Set)



Silindir Gömleği
(Liner)



Silindir Kit
(Assembly Set)



Piston - Blok Montaj
Yüksekliği
(Piston - Block
Assembly Height)

ANA YATAK
(MAIN BEARING)



H992/7 STD

KOL YATAK
(ARM BED)



71-3637 STD

71-2965 STD

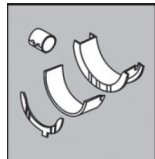
71-3561/6 STD

EKSANTRİK YATAK
(ECCENTRIC BEARING)



N109/7L STD

KOL BURCU
(SMALL END BUSH)



55-2862 SEMI

SİL. KAPAK. CONTA
(CYLINDER HEAD GASKET)

30-026235-10



AH5450

BG850

ÜST BÖLÜM TAKIM CONTA
(UPPER PART KIT GASKET)



21-26235-23/0

ALT BÖLÜM TAKIM CONTA
(LOWER SECTION KIT GASKET)



20-26235-18/0

