



MAN - Ø 128

87-71575-STDB



**Motor Özellikleri**  
(Engine Specifications)

İmalatçı (Manufacturer):  
MAN  
Çap (Diameter): Ø 128  
FM Grup No: 5421

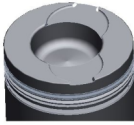
**D 2866 UH/UM/  
OH/F/FR**

6 Sil. Dizel 11967cc  
176 Kw (239 PS) 17,5:1  
16.242, 19.242, 24.242,  
25.242, 26.242, 33.242,  
Endüstriyel (Industrial)  
1983....

**Piston Ölçüleri**  
(Piston Dimensions)

A : 89.870  
B- : 31.070  
BØ : 66.600  
BX : 2.000  
D : 141.870  
E : 18.500

Pim: 46 x 105



**Piston Özellikleri**  
(Piston Features)

Segman Taşıyıcı  
(Ring Carrier)  
Gözarası Konik  
(Conical Eye Gap)



**Piston Parça No**  
(Piston Part No)

87-283100-42  
87-71575-STDB



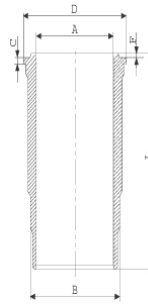
**Segman Seti**  
(Ring Set)

06-283100-40-STD  
3.500 CR KV4  
3.000 STD  
5.000 CR STD

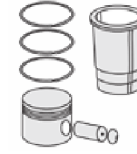


**Silindir Gömleği**  
(Liner)

14-452920-00-WH  
B : 144.500  
L : 270.000  
D : 153.800  
C : 10.070  
F : 1.000

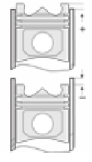


O-RING Bilgi  
(O-RING Information)  
24-32448-70/O  
2x 138\*2,1 FPM  
2x 144\*4 FPM



**Silindir Kit**  
(Assembly Set)

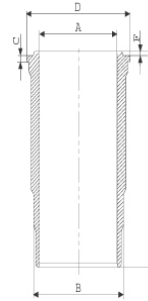
89-283100-42-STD  
89-71575-STDB



**Piston - Blok Montaj**  
Yüksekliği  
(Piston - Block  
Assembly Height)

0 / + 0,20

14-452930-00-WH  
B : 144.500  
L : 270.000  
D : 153.800  
C : 10.570  
F : 1.000



Flanş 0,50mm Farklı  
(Flange 0,50mm  
Different)



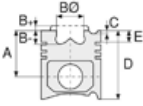


MAN - Ø 128

87-71575-STD B



Motor Özellikleri  
(Engine Specifications)



Piston Ölçüleri  
(Piston Dimensions)



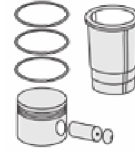
Piston Parça No  
(Piston Part No)



Segman Seti  
(Ring Set)



Silindir Gömleği  
(Liner)

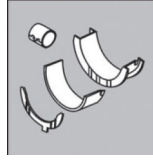


Silindir Kit  
(Assembly Set)



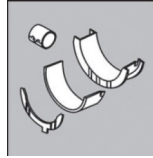
Piston - Blok Montaj  
Yüksekliği  
(Piston - Block  
Assembly Height)

ANA YATAK  
(MAIN BEARING)



H992/7 STD

KOL YATAK  
(ARM BED)

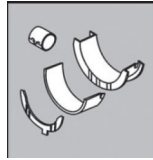


71-3637 STD

71-2965 STD

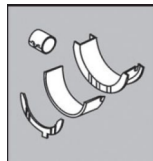
71-3561/6 STD

EKSANTRİK YATAK  
(ECCENTRIC BEARING)



N109/7L STD

KOL BURCU  
(SMALL END BUSH)



55-2862 SEMI

SİL. KAPAK. CONTA  
(CYLINDER HEAD GASKET)



30-026235-10



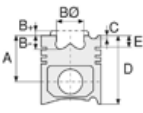


MAN - Ø 128

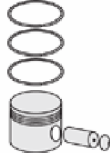
87-71575-STDB



**Motor Özellikleri**  
(Engine Specifications)



**Piston Ölçüleri**  
(Piston Dimensions)



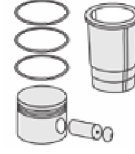
**Piston Parça No**  
(Piston Part No)



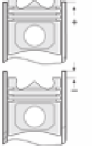
**Segman Seti**  
(Ring Set)



**Silindir Gömleği**  
(Liner)



**Silindir Kit**  
(Assembly Set)



**Piston - Blok Montaj**  
**Yüksekliği**  
(Piston - Block  
Assembly Height)

**ÜST BÖLÜM TAKIM CONTA**  
(UPPER PART KIT GASKET)



21-26235-21/0

**ALT BÖLÜM TAKIM CONTA**  
(LOWER SECTION KIT GASKET)



22-23336-01/0

**FULL TAKIM CONTA**  
(FULL SET GASKET)



20-26235-16/0

