



MAN - Ø 128

87-71576-STDB



**Motor Özellikleri**  
(Engine Specifications)

İmalatçı (Manufacturer):  
MAN  
Çap (Diameter): Ø 128  
FM Grup No: 5424

**D 2865 LUH**  
**02/03/05 EURO1**

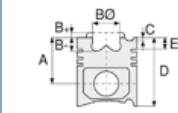
5 Sil. Dizel 9972cc  
221 Kw (300 PS) 16:1  
Turbo Intercooled  
19.361 FLS, 19.362 F,  
19.362 FS, 19.422,  
24.362, 25.362  
1987....

**D 2865 LF 02/03/04/  
06/10/15, LOH, LU01/  
02/03/04/06/22**

5 Sil. Dizel 9972cc  
221 Kw (300 PS) 16:1  
Turbo Intercooled  
19.361 FLS, 19.362 F,  
19.362 FS, 19.422,  
24.362, 25.362, S2000  
1987....

**D 2866 LF 01/02/03/  
04/05/06/07/09/  
15/22, LOH03**

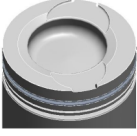
6 Sil. Dizel 11967cc  
198/324 Kw  
(269/441 PS) 16:1  
Turbo Intercooled  
19.361 FLS, 19.362 F,  
19.362 FS, 19.422,  
24.362, 25.362  
1987....



**Piston Ölçüleri**  
(Piston Dimensions)

A : 89.750  
B - : 24.400  
BØ : 75.600  
BX : 2.000  
C1 : 2.050  
D : 141.750  
E : 18.800

Pim: 46 x 105



**Piston Özellikleri**  
(Piston Features)

Segman Taşıyıcı  
(Ring Carrier)  
Yağ Püskürtme Oyuğu  
(Oil Jet Cut-out)  
Gözarası Konik  
(Conical Eye Gap)



**Piston Parça No**  
(Piston Part No)

87-283100-83  
87-71576-STD1B  
0,20 mm Kısa (Short)  
  
87-283100-84  
87-71576-STD2B  
0,40 mm Kısa (Short)  
  
87-283100-82  
87-71576-STDB



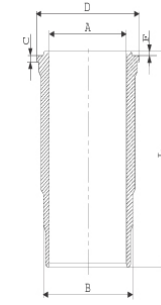
**Segman Seti**  
(Ring Set)

06-283100-40-STD  
  
3.500 CR KV4  
3.000 STD  
5.000 CR STD



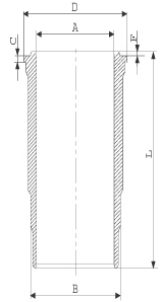
**Silindir Gömleği**  
(Liner)

14-452920-00-WH  
B : 144.500  
L : 270.000  
D : 153.800  
C : 10.070  
F : 1.000

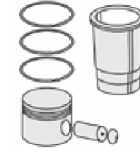


O-RING Bilgi  
(O-RING Information)  
24-32448-70/O  
2x 138\*2,1 FPM  
2x 144\*4 FPM

14-452930-00-WH  
B : 144.500  
L : 270.000  
D : 153.800  
C : 10.570  
F : 1.000

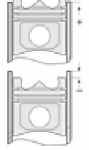


Flanş 0,50mm Farklı  
(Flange 0,50mm  
Different)



**Silindir Kit**  
(Assembly Set)

89-283100-82-STD  
89-71576-STDB



**Piston - Blok Montaj**  
**Yüksekliği**  
(Piston - Block  
Assembly Height)

+ 0,01 / + 0,038



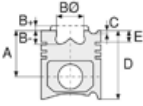


MAN - Ø 128

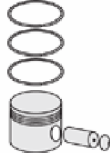
87-71576-STDB



**Motor Özellikleri**  
(Engine Specifications)



**Piston Ölçüleri**  
(Piston Dimensions)



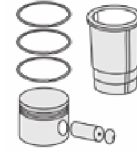
**Piston Parça No**  
(Piston Part No)



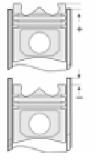
**Segman Seti**  
(Ring Set)



**Silindir Gömleği**  
(Liner)



**Silindir Kit**  
(Assembly Set)



**Piston - Blok Montaj**  
**Yüksekliği**  
(Piston - Block  
Assembly Height)

**Ana Yatak**  
(Main Bearing)

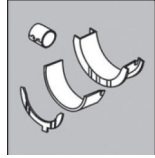


H992/6 STD

H992/7 STD

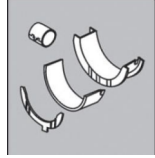
H12397STD

**Kol Burcu**  
(Arm Bush)



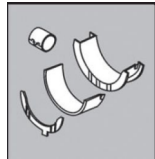
55-4747 SEMI

**Ay Yatak**  
(Thrust Washer)



A 1594 STD

**Kol Yatak**  
(Arm Bed)

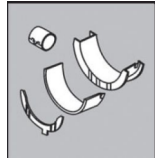


71-3637 STD

71-2965 STD

71-3561/6 STD

**Eksantrik Yatak**  
(Eccentric Bearing)



N109/7L STD

**Sil. Kapak. Conta**  
(Cylinder Head Gasket)



30-026235-10

30-026235-30

AH5450



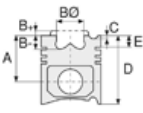


MAN - Ø 128

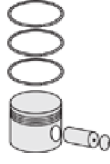
87-71576-STDB



**Motor Özellikleri**  
(Engine Specifications)



**Piston Ölçüleri**  
(Piston Dimensions)



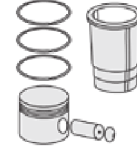
**Piston Parça No**  
(Piston Part No)



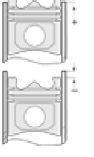
**Segman Seti**  
(Ring Set)



**Silindir Gömleği**  
(Liner)



**Silindir Kit**  
(Assembly Set)



**Piston - Blok Montaj**  
**Yüksekliği**  
(Piston - Block  
Assembly Height)

**ÜST BÖLÜM TAKIM CONTA**  
(UPPER PART KIT GASKET)



21-26235-23/0

**ALT BÖLÜM TAKIM CONTA**  
(LOWER SECTION KIT GASKET)



22-23335-01/0

**FULL TAKIM CONTA**  
(FULL SET GASKET)



20-26235-16/0



**FEDERAL-MOGUL**  
**POWERTRAIN**  
TÜRKİYE