



PERKINS LKW - Ø 100

87-71756-STD

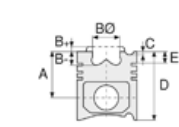


Motor Özellikleri
(Engine Specifications)

İmalatçı (Manufacturer):
PERKINS LKW
Çap (Diameter): Ø 100
FM Grup No: 6919

1004-4 PHASER 90
4 Sil. Dizel 3990cc 16,5:1
250 AS

1006-6 PHASER 125
6 Sil. Dizel 5985cc 16,5:1
250 AS SUPER



Piston Ölçüleri
(Piston Dimensions)

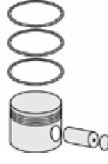
A : 70.000
B - : 20.140
BØ : 51.880
BX : 3.200
D : 108.000
E : 10.000

Pim: 34,925 x 84,1



Piston Özellikleri
(Piston Features)

Segman Taşıyıcı
(Ring Carrier)
Çelik Plaka
(Steel Strut)
Gözarası Konik
(Conical Eye Gap)



Piston Parça No
(Piston Part No)

87-101700-02
87-71756-STD



Segman Seti
(Ring Set)

06-101700-90-STD

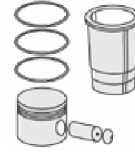
2.500 CKP KV1
2.500 P STD
4.000 CRP STD

06-118600-80-STD

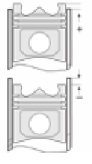
2.500 CK KV1
2.500 F14
4.000 GOE CR



Silindir Gömleği
(Liner)



Silindir Kit
(Assembly Set)



Piston - Blok Montaj
Yüksekliği
(Piston - Block
Assembly Height)

+0,14/+0,36

