



MERCEDES BENZ LKW - Ø 128

87-70522-STDB



**Motor Özellikleri**  
(Engine Specifications)

İmalatçı (Manufacturer):  
MERCEDES BENZ LKW  
Çap (Diameter): Ø 128  
FM Grup No: 5958

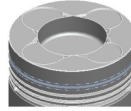
**OM 355A.968/  
969/978**

6 Sil. Dizel 11900cc  
206/210 KW  
(280/285 PS) 16,5:1  
Turbo  
1928, 2628, O 303  
1978....

**Piston Ölçüleri**  
(Piston Dimensions)

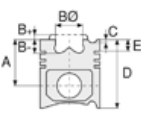
A : 90.260  
B- : 28.500  
BØ : 70.000  
C1 : 2.000  
C2 : 2.200  
D : 161.060  
E : 23.300

Pim: 48 x 108



**Piston Özellikleri**  
(Piston Features)

Segman Taşıyıcı  
(Ring Carrier)  
Gözarası Düz  
(Flat Eye Gap)



**Piston Parça No**  
(Piston Part No)

87-176900-32  
87-70522-STDB  
  
87-176907-32  
87-70522 050B  
  
87-176911-32  
87-70522 100B  
  
87-176914-32  
87-70522 150B

87-176900-82  
87-70522-STDC

87-176907-82  
87-70522 0,50C



**Segman Seti**  
(Ring Set)

06-176900-80-STD  
06-176907-80 0,50 mm  
06-176911-80 1,00 mm  
06-176914-80 1,50 mm

3.500 CK KVI  
3.500 STD  
3.500 STD  
6.500 CR STD

Goetze® LKZ-Ring®

06-176900-40-STD  
06-176907-40 0,50 mm  
06-176911-40 1,00 mm

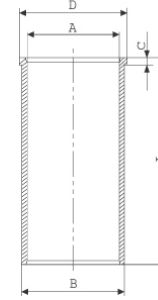
3.500 CK KVI  
3.500 GOE  
3.500 GOE  
6.500 CR GOE

Goetze® LKZ-Ring®



**Silindir Gömleği**  
(Liner)

14-025890-00-D  
B : 133.565  
L : 287.500  
D : 137.500  
C : 5.500



STD

14-025891-00-D  
B : 134.065  
L : 287.500  
D : 138.000  
C : 5.500

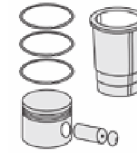
Dış Çap 0,50mm Farklı  
(Outer Diameter  
0,50 mm Different)

14-025892-00-D  
B : 134.565  
L : 287.500  
D : 138.500  
C : 5.500

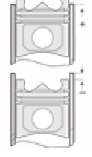
Dış Çap 1,00mm Farklı  
(Outer Diameter  
1,00 mm Different)

14-025893-00-D  
B : 135.065  
L : 287.500  
D : 139.000  
C : 5.500

Dış Çap 1,50 mm Farklı  
(Outer Diameter  
1,50 mm Different)



**Silindir Kit**  
(Assembly Set)



**Piston - Blok Montaj**  
Yüksekliği  
(Piston - Block  
Assembly Height)

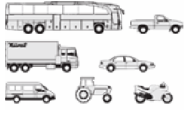
- 0,10 / + 0,22



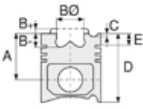


MERCEDES BENZ LKW - Ø 128

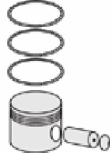
87-70522-STD B



Motor Özellikleri  
(Engine Specifications)



Piston Ölçüleri  
(Piston Dimensions)



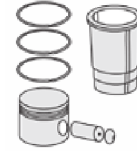
Piston Parça No  
(Piston Part No)



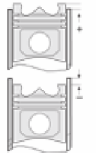
Segman Seti  
(Ring Set)



Silindir Gömleği  
(Liner)



Silindir Kit  
(Assembly Set)



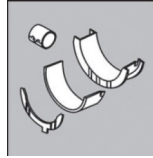
Piston - Blok Montaj  
Yüksekliği  
(Piston - Block  
Assembly Height)

**ANA YATAK**  
(MAIN BEARING)



H818/7 STD

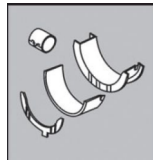
**KOL YATAK**  
(ARM BED)



71-3004 STD

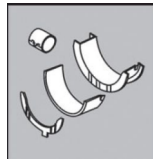
71-2549/6 STD

**EKSANTRİK YATAK**  
(ECCENTRIC BEARING)



N082/7 SEMI

**KOL BURCU**  
(SMALL END BUSH)



55-2538 SEMI

**SİL. KAPAK. CONTA**  
(CYLINDER HEAD GASKET)



30-021834-30

AS450

