



FORD LKW - Ø 112,01

87-70900-STD

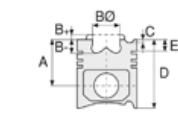


Motor Özellikleri
(Engine Specifications)

İmalatçı (Manufacturer):
FORD LKW
Çap (Diameter): Ø 112,01
FM Grup No: 3072

ECOTORQ NHDD

6 Sil. Dizel 7300cc
240 BG/300 BG
Mavi Blok Motorlar
(Blue Block Engines)
YENİ FORD KARGO 1824,
YENİ FORD KARGO 2524,
YENİ FORD KARGO 2530,
YENİ FORD KARGO 3230,
YENİ FORD KARGO 4030
2003...



Piston Ölçüleri
(Piston Dimensions)

A : 79.350
B - : 18.760
BØ : 74.000
D : 120.350
E : 17.350

Pim: 46 x 92,3



Piston Özellikleri
(Piston Features)

Segman Taşıyıcı
(Ring Carrier)
Soğutma Kanallı
(Coolin Gallery)
Yağ Püskürtme Oyuğu
(Oil Jet Cut-out)
Gözarası Konik
(Conical Eye Gap)



Piston Parça No
(Piston Part No)

87-842900-02
87-70900-STD

87-842900-03
87-70900-STD1
0,20 mm Kısa
(Short)

87-842900-04
87-70900-STD2
0,40 mm kısa
(short)



Segman Seti
(Ring Set)

06-842900-00-STD

3.000 CKP KV4
2.500 P F14
3.000 CRP GOE

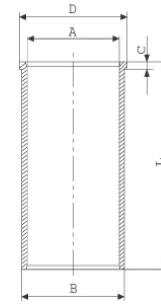
Goetze® LKZ-Ring®



Silindir Gömleği
(Liner)

14-020970-00-DH

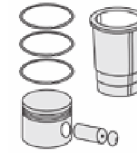
B : 115.035
L : 235.000
D : 125.800
C : 5.000



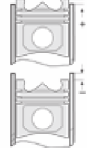
Grade 1-2-3
(Grup 1-2-3)

14-020971-00-DH
B : 115.285
L : 235.000
D : 126.050
C : 5.000

Grade 4-5 (Grup 4-5)



Silindir Kit
(Assembly Set)



Piston - Blok Montaj
Yüksekliği
(Piston - Block
Assembly Height)

+0,21 / +0,31

