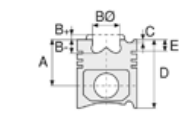


**Motor Özellikleri**  
(Engine Specifications)

İmalatçı (Manufacturer):  
RENAULT  
Çap (Diameter): Ø 76  
FM Grup No: 7223

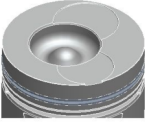
**K9K BP 790-796**  
4 Sil. Dizel 1500cc 65 PS  
COMMON RAIL  
CLIO SYMBOL 1.5 dCi,  
KANGOO 1.5 dCi  
2002...



**Piston Ölçüleri**  
(Piston Dimensions)

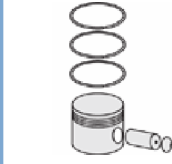
A : 41.700  
B - : 14.000  
BØ : 39.700  
BX : 1.520  
BY : 2.590  
C1 : 0.430  
C2 : 0.250  
D : 66.000  
E : 17.000

Pim : 25 x 60



**Piston Özellikleri**  
(Piston Features)

Segman Taşıyıcı  
(Ring Carrier)  
Yağ Püskürtme Oyuğu  
(Oil Jet Cut-Out)  
Gözarası Konik  
(Conical Eye Gap)



**Piston Parça No**  
(Piston Part No)

87-123400-32  
87-71820-STDA  
Pim çapı 25 mm  
(Pin diameter 25 mm)

87-123407-32  
87-71820 050A  
87-123407-13  
87-71859-0501A  
0,20 mm Kısa (Short)

87-123407-14  
87-71859-0502A  
0,40 mm Kısa (Short)

87-123411-13  
87-71859-1001A  
0,20 mm Kısa (Short)

87-123400-13  
87-71859-STD1A  
0,20 mm Kısa (Short)

87-123400-14  
87-71859-STD2A  
0,40 mm Kısa (Short)

87-123400-12  
87-71859-STDA

87-123407-12  
87-71859 050A

87-123411-12  
87-71859 100A



**Segman Seti**  
(Ring Set)

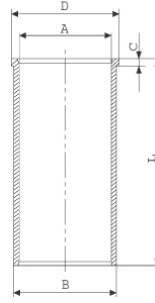
06-123400-10-STD  
06-123407-10-0,50 mm  
06-123411-10-1,00 mm  
2.000 CKP KV1  
2.000 P GOE  
2.500 CRP GOE

Goetze® LKZ-Ring®  
Yağ Segmanı Matkap Delik  
(Oil Ring Drill Hole)



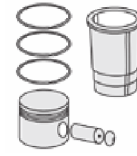
**Silindir Gömleği**  
(Liner)

14-020650-00-D  
B : 79.100  
L : 142.000  
D : 81.000  
C : 5.000

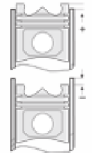


14-020651-00-D  
B : 79.600  
L : 142.000  
D : 81.500  
C : 5.500

Dıştan çap 0,50  
mm farklı  
(Outside Diameter  
0.50mm Different)



**Silindir Kit**  
(Assembly Set)



**Piston - Blok Montaj**  
Yüksekliği  
(Piston - Block  
Assembly Height)

+ 0,25 / + 0,30

