



VOLKSWAGEN - Ø 93

87-72166-STD



Motor Özellikleri
(Engine Specifications)

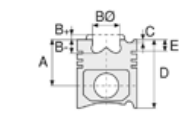
İmalatçı (Manufacturer):
VOLKSWAGEN
Çap (Diameter): Ø 93
FM Grup No: 86116

AUH

4 Sil. Dizel 2792cc 116
Kw (158 PS) Turbo , 12v.
C.Rail Motor No: 161772
LT28 D-AUH, LT35 D -
AUH, LT46 D-AUH
2002...

BCQ - ATA

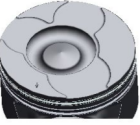
4 Sil. Dizel 2798cc 116
Kw (158 PS) Turbo , 12v
Motor No: 162566
LT28 D-AUH, LT35 D -
AUH, LT46 D-AUH
2002...



Piston Ölçüleri
(Piston Dimensions)

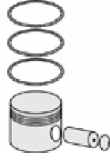
A : 56.150
B - : 18.500
BØ : 47.100
BX : 4.000
C1 : 1.500
D : 87.200
E : 9.150

Pim : 35 x 77



Piston Özellikleri
(Piston Features)

Segman Taşıyıcı
(Ring Carrier)
Sert Anotlama
(Hard Anodizing)
Yağ Püskürtme Oyuğu
(Oil Jet Cut-Out)
Gözarası Konik
(Conical Eye Gap)



Piston Parça No
(Piston Part No)

87-891500-02
87-72166-STD

87-891507-02
87-72166-050



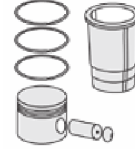
Segman Seti
(Ring Set)

06-891500-00-STD
06-891507-00-0,50 mm

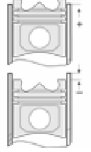
2.500 CRP KV1
2.000 P F14
3.000 CRP STD



Silindir Gömleği
(Liner)



Silindir Kit
(Assembly Set)



Piston - Blok Montaj
Yüksekliği
(Piston - Block
Assembly Height)

0,41 / 0,63

Ay Yatak
(Thrust Washer)



A138/4 STD

