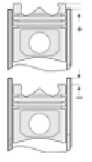
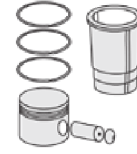
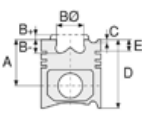




VOLKSWAGEN - Ø 81,01

87-72174-STD



Motor Özellikleri
(Engine Specifications)

İmalatçı (Manufacturer):
VOLKSWAGEN
Çap (Diameter): Ø 81,01
FM Grup No: 86057

BVE

4 Sil. Dizel 2000cc 122 BG
PASSAT 2.0 TDi
2005 - 2007

BWV

4 Sil. Dizel 2000cc 120 BG
PASSAT 2.0 TDi
2005 - 2007

BMA

4 Sil. Dizel 2000cc 136 BG
PASSAT 2.0 TDi
2005....

BKD

4 Sil. Dizel 2000cc 140 BG
JETTA 2.0 TDi
2003 - 2008

BMN

4 Sil. Dizel 2000cc 170
JETTA 2.0 TDi
2005 - 2008

BVE

4 Sil. 2000cc 140 BG
GOLF 5 2.0 TDi

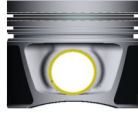
BKP

4 Sil. Dizel 2000cc 140 BG
PASSAT 2.0 TDi
2005....

Piston Ölçüleri
(Piston Dimensions)

A : 45.800
B - : 17.800
BØ : 38.000
BY : 1.200
D : 68.800
E : 9.000

Pim: 26 x 66



Piston Özellikleri
(Piston Features)

Segman Taşıyıcı
(Ring Carrier)
Soğutma Kanallı
(Coolin Gallery)
Yağ Püskürtme Oyuğu
(Oil Jet Cut-out)
Burçlu Piston
(Bushing Piston)
Gözarası Konik
(Conical Eye Gap)

Piston Parça No
(Piston Part No)

87-139500-22
87-72174-STD

87-139507-22
87-72174 0,50

Segman Seti
(Ring Set)

06-139500-00-STD
06-139507-00 0,50 mm

1.750 CKP KV4
2.000 P F14
3.000 CRP STD

Silindir Gömleği
(Liner)

Silindir Kit
(Assembly Set)

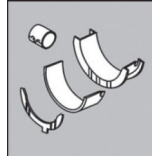
Piston - Blok Montaj
Yüksekliği
(Piston - Block
Assembly Height)

1,55 mm Conta ile
(With Gasket)
0,91/1,00

1,63 mm Conta ile
(With Gasket)
1,01/1,10

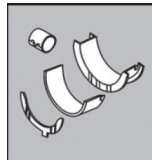
1,71 mm Conta ile
(With Gasket)
1,11/1,20

Ana Yatak
(Main Bearing)



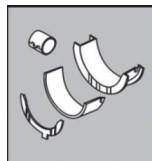
H079/5 S STD

Kol Yatak
(Arm Bed)



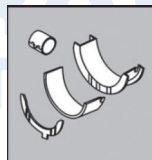
71-3930 STD

Ay Yatak
(Thrust Washer)



A123/4 STD

Kol Burcu
(Small End Bush)



55-3729 SEMI

