



VOLVO- VOLKSWAGEN - Ø 76,51

87-72187-STD A



**Motor Özellikleri**  
(Engine Specifications)

İmalatçı (Manufacturer):  
VOLVO-VOLKSWAGEN  
Çap (Diameter): Ø 76,51  
FM Grup No: 8608

**JP**

4 Sil. Dizel 1588cc 40  
Kw (54 PS) 23.5:1  
GOLF, JETTA  
1980 - 1983

**CR**

4 Sil. Dizel 1588cc 40  
Kw (54 PS) 23.5:1 GOLF II,  
JETTA, PASSAT  
1981 - 1982

**CY**

4 Sil. Dizel 1588cc 51  
Kw (69 PS) 23.5:1 Turbo  
GOLF TD, JETTA TD,  
PASSAT TD, SANTANA TD  
1981 - 1988

**MF**

4 Sil. Dizel 1588cc 51  
Kw (69 PS) 23.5:1 Turbo  
GOLF TD, JETTA TD  
1988 - 1991

**CS**

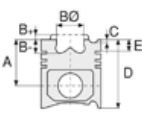
4 Sil. Dizel 1588cc 37  
Kw (50 PS) 23.5:1 Turbo  
TYP 2  
1981 - 1987

**ME**

4 Sil. Dizel 1588cc 40  
Kw (54 PS) 23.5:1 Turbo  
CADDY, GOLF, JETTA  
1988 - 1992

**IV**

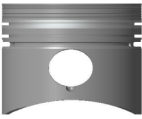
4 Sil. Dizel 1588cc 44  
Kw (60 PS) 23:1 Turbo  
GOLF TD CATALYST,  
JETTA TD CATALYST  
1989 - 1992



**Piston Ölçüleri**  
(Piston Dimensions)

A : 41.700  
B - : 1.600  
D : 71.700  
E : 12.400

Pim : 24 x 64



**Piston Özellikleri**  
(Piston Features)

Segman Taşıyıcı  
(Ring Carrier)  
Çelik Plaka  
(Steel Strut)  
Gözarası Düz  
(Flat Eye Gap)



**Piston Parça No**  
(Piston Part No)

87-109800-02  
87-72187-STD A

87-109807-02  
87-72187-050A

87-109811-02  
87-72187-100A

87-405200-02  
87-72187-STD B

87-405207-02  
87-72187-050B

87-405211-02  
87-72187-100B



**Segman Seti**  
(Ring Set)

06-109800-00-STD  
06-109807-00-0,50 mm  
06-109811-00-1,00 mm

1.750 CRP KV1  
2.000 CRP İKA  
3.000 CRP STD

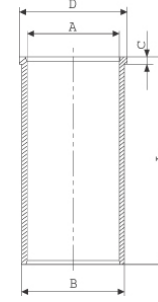
06-405200-00-STD  
06-405207-00-0,50 mm  
06-405211-00-1,00 mm

1.750 CRP KV1  
2.000 P STD  
3.000 CRP STD



**Silindir Gömleği**  
(Liner)

14-023470-00-D  
B : 79.500  
L : 142.000  
D : 82.500  
C : 4.700

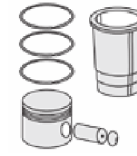


14-023471-00-D  
B : 80.000  
L : 142.000  
D : 83.000  
C : 6.000

Dış Çap 0,50mm Farklı  
(Outside Diameter  
0.50mm Different)

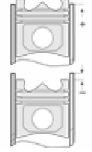
14-023472-00-D  
B : 80.500  
L : 142.000  
D : 83.500  
C : 6.000

Dış Çap 1,00mm Farklı  
(Outside Diameter  
1.00mm Different)



**Silindir Kit**  
(Assembly Set)

89-333500-02-STD  
89-71846-STD



**Piston - Blok Montaj**  
Yüksekliği  
(Piston - Block  
Assembly Height)

1. Çentik (Notch) 1,40mm  
+ 0,67 / + 0,80

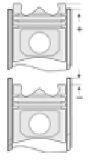
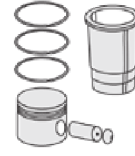
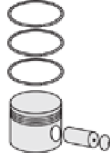
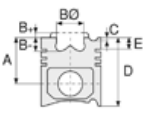
2. Çentik (Notch) 1,50mm  
+ 0,81 / + 0,90

3. Çentik (Notch) 1,60mm  
+ 0,91 / + 1,02



VOLVO- VOLKSWAGEN - Ø 76,51

87-72187-STD A



**Motor Özellikleri**  
(Engine Specifications)

**Piston Ölçüleri**  
(Piston Dimensions)

**Piston Parça No**  
(Piston Part No)

**Segman Seti**  
(Ring Set)

**Silindir Gömleği**  
(Liner)

**Silindir Kit**  
(Assembly Set)

**Piston - Blok Montaj**  
Yüksekliği  
(Piston - Block  
Assembly Height)

**JK**

4 Sil. Dizel 1588cc 40  
Kw (54 PS) 23.5:1 Turbo  
GOLF, JETTA, PASSAT,  
SANTANA  
1982 - 1990

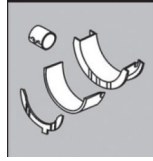
**JR**

4 Sil. Dizel 1588cc 51  
Kw (69 PS) 23.5:1 Turbo  
GOLF GTD, JETTA GTD,  
PASSAT GTD, SANTANA  
GTD  
1986 - 1988

**DW**

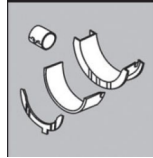
6 Sil. Dizel 2383cc 55-57  
Kw (75-78 PS) 23.5:1  
Volvo ile ortak motor  
(With Volvo Common  
Engine)  
LT 40, LT28, LT35, LT55  
1982 - 1992

**Kol Yatak**  
(Arm Bed)



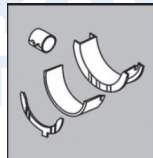
71-3442/4 STD

**Ay Yatak**  
(Thrust Washer)



A123/4 STD

**Kol Burcu**  
(Small End Bush)



55-3443 SEMI

