



VOLKSWAGEN - Ø 76,51

87-72189-STD



**Motor Özellikleri**  
(Engine Specifications)

İmalatçı (Manufacturer):  
VOLKSWAGEN  
Çap (Diameter): Ø 76,51  
FM Grup No: 8609

**RA, SB**

4 Sil. Dizel 1588cc  
59Kw (80 PS) 23:1  
Turbo Intercool  
GOLF, JETTA, PASSAT  
1989 - 1993

**DE**

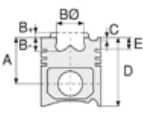
5 Sil. Dizel 1986cc  
64Kw (87 PS) 23:1  
Turbo  
JETTA  
1991 - 1992

**NC**

5 Sil. Dizel 1985cc  
75Kw (102 PS) 23:1  
Turbo Intercool  
LT28D, LT31D, LT35D,  
LT40D, LT45D, LT50D,  
LT55D  
1991 - 1992

**DV**

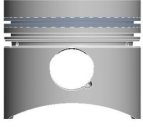
6 Sil. Dizel 2384cc  
75Kw (102 PS) 23:1  
Turbo  
LD31D, LT28D, LT35D,  
LT40D, LT45D, LT50D,  
LT55D  
1982 - 1992



**Piston Ölçüleri**  
(Piston Dimensions)

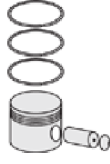
A : 41.700  
B - : 1.600  
D : 71.700  
E : 12.500

Pim: 24 x 64



**Piston Özellikleri**  
(Piston Features)

Segman Taşıyıcı  
(Ring Carrier)  
Çelik Plaka  
(Steel Strut)  
Sert Anotlama  
(Hard Anodizing)  
Yağ Püskürtme Oyuğu  
(Oil Jet Cut-out)  
Gözarası Konik  
(Conical Eye Gap)



**Piston Parça No**  
(Piston Part No)

87-109800-22  
87-72189-STD  
87-109807-22  
87-72189-050  
87-109811-22  
87-72189-100



**Segman Seti**  
(Ring Set)

06-109800-00-STD  
06-109807-00 0,50 mm  
06-109811-00 1,00 mm

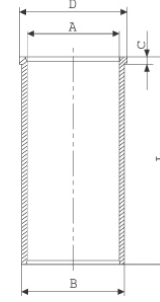
1.750 CRP KVI  
2.000 CRP IKA  
3.000 CRP STD



**Silindir Gömleği**  
(Liner)

14-023470-00-D

B : 79.500  
L : 142.000  
D : 82.500  
C : 4.700



14-023471-00-D

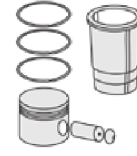
B : 80.000  
L : 142.000  
D : 83.000  
C : 6.000

Dış Çap 0,50mm Farklı  
(Outer Diameter  
0,50 mm Different)

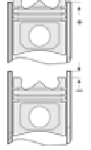
14-023472-00-D

B : 80.500  
L : 142.000  
D : 83.500  
C : 6.000

Dış Çap 1,00mm Farklı  
(Outer Diameter  
1,00 mm Different)



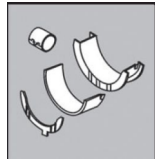
**Silindir Kit**  
(Assembly Set)



**Piston - Blok Montaj**  
**Yüksekliği**  
(Piston - Block  
Assembly Height)

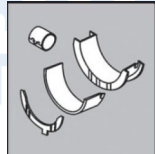
1. Çentik (Notch)  
1,53mm + 0,66 / + 0,80  
2. Çentik (Notch)  
1,57mm + 0,81 / + 0,90  
3. Çentik (Notch)  
1,61mm + 0,91 / + 1,02

**Ay Yatak**  
(Thrust Washer)



A123/4 STD

**Kol Burcu**  
(Small End Bush)



55-3443 SEMI

