



**Motor Özellikleri**  
(Engine Specifications)

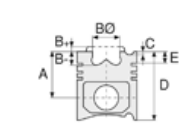
İmalatçı (Manufacturer):  
MERCEDES BENZ LKW  
Çap (Diameter): Ø 102  
FM Grup No: 5973

**OM 904LA EURO2**

4 Sil. Dizel 4250cc  
90/100/125  
Kw(122/136/170 PS) 17:1  
Turbocharged Intercool  
ATEGO 1215, ATEGO 1517  
2000....

**OM 906LA EURO2**

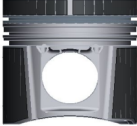
6 Sil. Dizel 6374cc  
170/205/228  
Kw(231/279/310 PS) 17:1  
Turbocharged Intercool  
AXOR 1823, AXOR 2523,  
AXOR 2528, AXOR 2628,  
AXOR 3028  
2000....



**Piston Ölçüleri**  
(Piston Dimensions)

A : 64.400  
B- : 13.800  
BØ : 73.300  
D : 102.500  
E : 15.000

Pim: 42 x 80



**Piston Özellikleri**  
(Piston Features)

Segman Taşıyıcı  
(Ring Carrier)  
Gözarası Konik  
(Conical Eye Gap)



**Piston Parça No**  
(Piston Part No)

87-289357-23  
87-72535-0501B  
0,30 mm Kısa (Short)

87-289357-24  
87-72535-0502B  
0,60 mm Kısa (Short)

87-289350-23  
87-72535-STD1B  
0,30 mm Kısa (Short)

87-289350-24  
87-72535-STD2B  
0,60 mm Kısa (Short)

87-289350-22  
87-72535-STDB

87-289357-22  
87-72535-050B

87-289361-23  
87-72535-1001B  
-0,30 mm Kısa (Short)



**Segman Seti**  
(Ring Set)

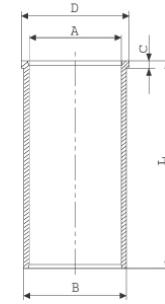
06-289350-30-STD  
06-289357-30 0,50

3.000 CK KV4  
2.500 F14  
4.000 CR GOE



**Silindir Gömleği**  
(Liner)

14-020320-10-D  
B : 106.020  
L : 220.000  
D : 109.500  
C : 6.000

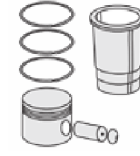


14-020321-10-D  
B : 106.500  
L : 220.000  
D : 110.000  
C : 6.500

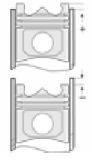
Dış Çap 0,50 mm Farklı  
(Outer Diameter  
0,50 mm Different)

14-020322-10-D  
B : 107.000  
L : 220.000  
D : 110.500  
C : 7.000

Dış Çap 1,00 mm Farklı  
(Outer Diameter  
1,00 mm Different)



**Silindir Kit**  
(Assembly Set)



**Piston - Blok Montaj**  
Yüksekliği  
(Piston - Block  
Assembly Height)

+0,28 / +0,50





Motor Özellikleri  
(Engine Specifications)



Piston Ölçüleri  
(Piston Dimensions)



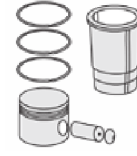
Piston Parça No  
(Piston Part No)



Segman Seti  
(Ring Set)



Silindir Gömleği  
(Liner)

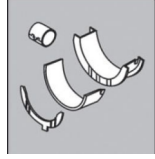


Silindir Kit  
(Assembly Set)



Piston - Blok Montaj  
Yüksekliği  
(Piston - Block  
Assembly Height)

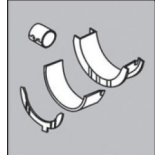
Eksantrik Yatak  
(Eccentric Bearing)



54-4761 SEMI (KEP)

54-4762 SEMI (HALKA)

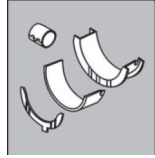
Ana Yatak  
(Main Bearing)



H067/5 0.25MM

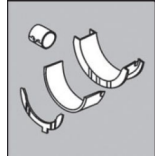
72-3851 STD

Kol Yatak  
(Arm Bed)



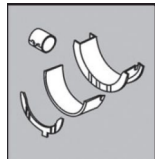
71-3850 STD

Ay Yatak  
(Thrust Washer)



A302/2 STD

Kol Burcu  
(Small End Bush)



55-3854 SEMI

Sil. Kapak. Conta  
(Cylinder Head Gasket)



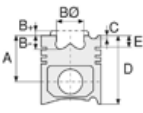
30-028733-20

AC5931

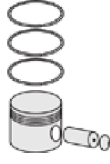




**Motor Özellikleri**  
(Engine Specifications)



**Piston Ölçüleri**  
(Piston Dimensions)



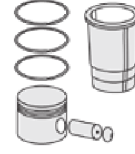
**Piston Parça No**  
(Piston Part No)



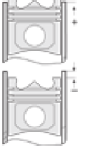
**Segman Seti**  
(Ring Set)



**Silindir Gömleği**  
(Liner)



**Silindir Kit**  
(Assembly Set)



**Piston - Blok Montaj**  
**Yüksekliği**  
(Piston - Block  
Assembly Height)

**Üst Bölüm Takım Conta**  
(Upper Part Kit Gasket)



21-28723-50/0

**Alt Bölüm Takım Conta**  
(Lower Section Kit Gasket)



22-28727-00/0

