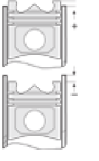
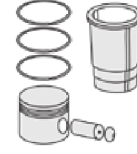
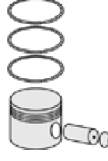
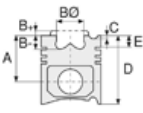




VOLVO - Ø 144

87-73696-STD



Motor Özellikleri
(Engine Specifications)

İmalatçı (Manufacturer):
VOLVO
Çap (Diameter): Ø 144
FM Grup No: 880154

TAMD162C, TD162
6 Sil. Dizel 16120cc
315-381 KW (428-519 PS)
Jeneratör, Marin
(Generator, Marine)
1988....

Piston Ölçüleri
(Piston Dimensions)

A : 110.300
B- : 32.250
BØ : 82.000
D : 163.300
E : 16.100

Pim: 60 x 123



Piston Özellikleri
(Piston Features)

Segman Taşıyıcı
(Ring Carrier)
Soğutma Kanallı
(Coolin Gallery)
Gözarası Konik
(Conical Eye Gap)

Piston Parça No
(Piston Part No)

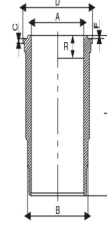
87-833300-22
87-73696-STD

Segman Seti
(Ring Set)

06-833300-80-STD
4.000 CKS KV4
3.500 CKS IKA
5.000 CR STD

Silindir Gömleği
(Liner)

14-451010-00-WH
B : 158.900
L : 315.000
D : 172.000
C : 13.090
F : 2.000
R : 18.150



O-Ring Bilgi
(O-Ring Information)
24-35043-90/O
1x 169*2,4 FPM
1x 155*2,5 EPDM
2x 157,6*5,8 FPM
1x 157,6*5,8 FPM

Silindir Kit
(Assembly Set)

89-833300-22-STD
89-73696-STD

Piston - Blok Montaj
Yüksekliği
(Piston - Block
Assembly Height)

-0,90/-1,50

