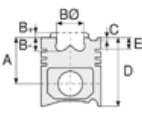




VOLVO - Ø 144

87-73699-STD



Motor Özellikleri
(Engine Specifications)

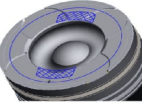
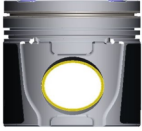
İmalatçı (Manufacturer):
VOLVO
Çap (Diameter): Ø 144
FM Grup No: 880151

D16A, D16B
6 Sil. Dizel 16100cc
346-382 KW
(470-520 PS)
FH 16
1994....

Piston Ölçüleri
(Piston Dimensions)

A : 110.500
B- : 28.700
BØ : 80.000
C1 : 1.650
D : 163.500
E : 16.100

Pim: 60 x 115



Piston Özellikleri
(Piston Features)

Segman Taşıyıcı
(Ring Carrier)
Sert Anotlama
(Hard Anodizing)
Soğutma Kanallı
(Coolin Gallery)
Burçlu Piston
(Bushing Piston)
Gözarası Konik
(Conical Eye Gap)

Piston Parça No
(Piston Part No)

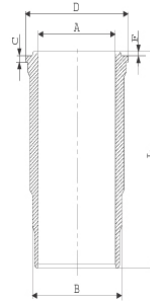
87-833100-22
87-73699-STD

Segman Seti
(Ring Set)

06-833100-80-STD
4.500 CKS KV1
3.500 CKS IKA
5.000 CR STD

Silindir Gömleği
(Liner)

14-451030-00-WH
B : 158.950
L : 315.000
D : 172.000
C : 13.100
F : 2.000



O-Ring Bilgi
(O-Ring Information)
24-35043-90/O
1x 169*2,4 FPM
1x 155*2,5 EPDM
2x 157,6*5,8 FPM
1x 157,6*5,8 FPM

Silindir Kit
(Assembly Set)

89-833100-22-STD
89-73699-STD

Piston - Blok Montaj
Yüksekliği
(Piston - Block
Assembly Height)

-0,90/-1,50



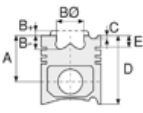


VOLVO - Ø 144

87-73699-STD



Motor Özellikleri
(Engine Specifications)



Piston Ölçüleri
(Piston Dimensions)



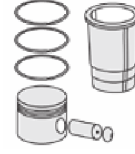
Piston Parça No
(Piston Part No)



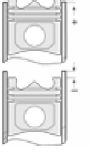
Segman Seti
(Ring Set)



Silindir Gömleği
(Liner)

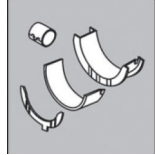


Silindir Kit
(Assembly Set)



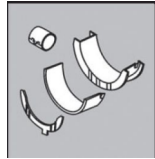
Piston - Blok Montaj
Yüksekliği
(Piston - Block
Assembly Height)

ANA YATAK
(MAIN BEARING)



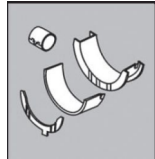
H1083/7 STD

KOL YATAK
(ARM BED)



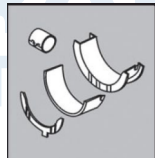
71-4055/6 STD

AY YATAK
(THRUST WASHER)



A131/4 STD

KOL BURCU
(SMALL END BUSH)



55-4058 SEMI

