



PEUGEOT - Ø 86,01

87-79953-STD



**Motor Özellikleri**  
(Engine Specifications)

İmalatçı (Manufacturer):  
PEUGEOTT  
Çap (Diameter): Ø 86,01  
FM Grup No: 7168

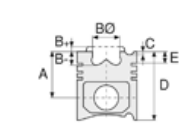
**2.2 HDİ**

4 Sil. Dizel 2179cc 74  
KW/100 HP Boxer 2.2L  
2002 - 2006

P22DTE ( Euro 4 )  
81kw/110 PS ( 4HG)

P22DTE ( Euro 4 )  
96kw/130 PS ( 4HH)

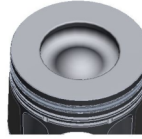
P22DTE ( Euro 4 )  
110kw/150 PS ( 4HJ)



**Piston Ölçüleri**  
(Piston Dimensions)

A : 48.420  
B - : 16.170  
B0 : 49.040  
D : 74.820  
E : 8.610

Pim : 30 x 66,85



**Piston Özellikleri**  
(Piston Features)

Segman Taşıyıcı  
(Ring Carrier)  
Soğutma Kanallı  
(Cooling Gallery)  
Yağ Püskürtme Oyuğu  
(Oil Jet Cut-Out)  
Gözarası Konik  
(Conical Eye Gap)



**Piston Parça No**  
(Piston Part No)

87-839500-72  
87-79953-STD  
87-839507-72  
87-79953-0,50

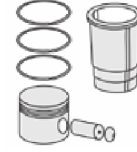


**Segman Seti**  
(Ring Set)

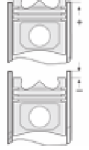
06-839500-00-STD  
06-839505-00-0,25 mm  
06-839507-00-0,50 mm  
06-839511-00-1,00 mm  
2.000 CKP KV1  
2.000 P GOE  
2.000 NT ST



**Silindir Gömleği**  
(Liner)



**Silindir Kit**  
(Assembly Set)



**Piston - Blok Montaj**  
Yüksekliği  
(Piston - Block  
Assembly Height)

