


Motor Özellikleri
(Engine Specifications)

İmalatçı (Manufacturer):
MERCEDES BENZ LKW
Çap (Diameter): Ø 100
FM Grup No: 59041

Kompresör
(Compressor)

1 Sil.
OM 501/502
Kompresör (Compressor)

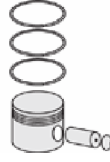
Piston Ölçüleri
(Piston Dimensions)

A : 30.400
D : 52.200
E : 3.700

Pim: 20 x 50


Piston Özellikleri
(Piston Features)

Gözarası Düz
(Flat Eye Gap)


Piston Parça No
(Piston Part No)

87-826050-02
87-72538-STDA

87-826050-22
87-72538-STDC


Segman Seti
(Ring Set)

06-826050-20-STD
06-826057-20 0,50

2.500  CR KV1
2.500  F14
3.000  GOE

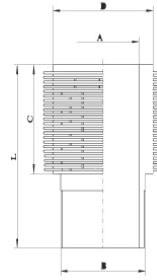
Yağ Segmanı Matkap
Delik (Oil Ring Drill Hole)

06-826050-40-STD
06-826057-40 0,50

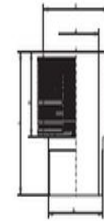
2.500  KV1
2.500  F14
3.000  GOE


Silindir Gömleği
(Liner)

14-000350-00-WH
B : 106.000
L : 101.000
D : 130.000
C : 88.900



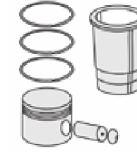
14-000430-00-WH
B : 106.000
L : 100.900
D : 130.000
C : 88.900



14-000350-00-WH
B : 106.000
L : 101.000
D : 130.000
C : 88.900

14-000430-00-WH
B : 106.000
L : 100.900
D : 130.000
C : 88.900

14-000450-00-WH
B : 106.000
L : 91.000
D : 130.000
C : 83.800


Silindir Kit
(Assembly Set)

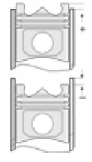
88-826050-02-STD
88-72538-STDA

88-826050-12-STD
88-72538-STDB

88-826050-22-STD
88-72538-STDC

88-826050-32-STD
88-72538-STDD

88-826050-52
88-72538-STDE


Piston - Blok Montaj
Yüksekliği
(Piston - Block
Assembly Height)
