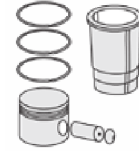




OPEL - Ø 83

87-73448-STD



Motor Özellikleri
(Engine Specifications)

Piston Ölçüleri
(Piston Dimensions)

Piston Parça No
(Piston Part No)

Segman Seti
(Ring Set)

Silindir Gömleği
(Liner)

Silindir Kit
(Assembly Set)

Piston - Blok Montaj
Yüksekliği
(Piston - Block
Assembly Height)

İmalatçı (Manufacturer):
OPEL

Çap (Diameter): Ø 83
FM Grup No: 6687

B 20 DTH EURO 6
4 Sil. Dizel 1956cc

125KW-170PS 16,5

ANTARA, INSIGNIA

A-B, ZAFIRA TOURER C
2014....

A : 46.800

B- : 14.340

BØ : 48.340

C1 : 1.680

C2 : 1.780

D : 72.800

E : 10.000

Pim: 29 x 65

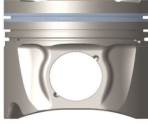
87-880400-02
87-73448-STD

06-880400-00-STD

1.500  CK KV4

1.500  P F14

2.000  CR GOE



Piston Özellikleri
(Piston Features)

Segman Taşıyıcı
(Ring Carrier)

Soğutma Kanallı
(Coolin Gallery)

Yağ Püskürtme Oyuğu
(Oil Jet Cut-out)

Gözarası Konik
(Conical Eye Gap)

