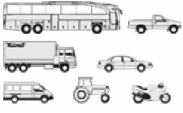




ISUZU - Ø 110,04

86-71225-STD



Motor Özellikleri
(Engine Specifications)

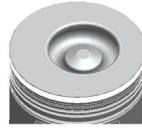
İmalatçı (Manufacturer):
ISUZU
Çap (Diameter): Ø 110,04
FM Grup No: 3913

4HE1-T
4 Sil. Dizel 4751cc 146 Ps
NQR3D, TURKUAZ
1999....

Piston Ölçüleri
(Piston Dimensions)

A : 66.200
B- : 22.200
BØ : 56.500
BX : 5.000
BY : 1.000
D : 119.950
E : 12.900

Pim: 40 x 87



Piston Özellikleri
(Piston Features)

Segman Taşıyıcı
(Ring Carrier)
Çelik Plaka
(Steel Strut)
Soğutma Kanallı
(Coolin Gallery)
Gözarası Konik
(Conical Eye Gap)

Piston Parça No
(Piston Part No)

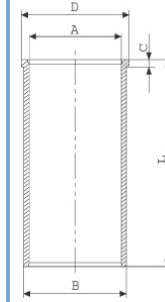
86-71225-STD
86-71225-STD

Segman Seti
(Ring Set)

3.000
2.500
4.000

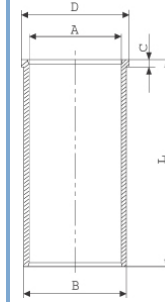
Silindir Gömleği
(Liner)

14-022070-00-D
B : 116.000
L : 210.000
D : 121.600
C : 6.300



Semi Finish

14-040080-00-DH
B : 115.001
L : 210.000
D : 121.600
C : 5.070
F : 0.400



Dış Yüzeyi
Fosfat Kaplı
(Outer Surface
Phosphate Coated)

14-040081-00-DH
B : 115.280
L : 210.000
D : 121.850
C : 5.950
F : 0.400

Silindir Kit
(Assembly Set)

Piston - Blok Montaj
Yüksekliği
(Piston - Block
Assembly Height)

1,41-1,49 mm Conta
Kalınlığı (Gasket
Thickness)
+0,579/+0,659

1,46-1,56 mm Conta
Kalınlığı (Gasket
Thickness)
+0,660/+0,729

1,51-1,59 mm Conta
Kalınlığı (Gasket
Thickness)
+0,730/+0,809



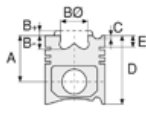


ISUZU - Ø 110,04

86-71225-STD



Motor Özellikleri
(Engine Specifications)



Piston Ölçüleri
(Piston Dimensions)



Piston Parça No
(Piston Part No)



Segman Seti
(Ring Set)

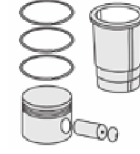


Silindir Gömleği
(Liner)

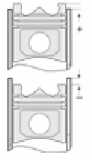
Dış Çap 0,25 mm Farklı
(Outside Diameter
0,50 mm Different)

14-040082-00-DH
B : 115.530
L : 210.000
D : 122.100
C : 6.200
F : 0.400

Dış Çap 0,50 mm Farklı
(Outside Diameter
0,50 mm Different)

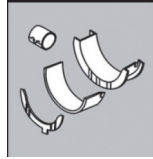


Silindir Kit
(Assembly Set)



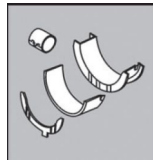
Piston - Blok Montaj
Yüksekliği
(Piston - Block
Assembly Height)

Ana Yatak
(Main Bearing)



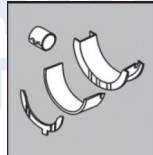
H1307/5 STD

Kol Yatak
(Connecting Rod Bearing)



71-4856/4 STD

Ay Yatak
(Thrust Washer)



A307/3 STD

