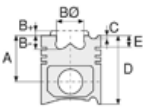




BMW- Ø 77

87-70274-STD



Motor Özellikleri
(Engine Specifications)

Piston Ölçüleri
(Piston Dimensions)

Piston Parça No
(Piston Part No)

Segman Seti
(Ring Set)

Silindir Gömleği
(Liner)

Silindir Kit
(Assembly Set)

Piston - Blok Montaj
Yüksekliği
(Piston - Block
Assembly Height)




İmalatçı (Manufacturer):
BMW
Çap (Diameter): 77
FM Grup No: 1452

A : 27.500
B- : 2.000
BØ : 57.500
C1 : 3.970
C2 : 5.950
D : 47.500
E : 7.600

87-816500-32
87-70274-STD

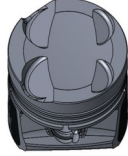
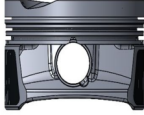
87-816507-32
87-70274-0,50

06-816500-50-STD
06-816507-50 0,50 mm

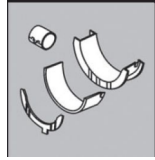
1.200  P ST
1.500  P GOE
2.000  CR ST

N12B16A
4 Sil. Benzinli 85-88
KW-116-120PS
MINI
2007...

Pim: 18 x 43

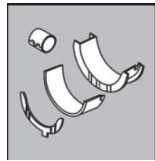


Ana Yatak
(Main Bearing)



H1087/5 STD

Kol Yatak
(Connecting Rod Bearing)



01-4362/4 STD

Silindir Kapak Conta
(Cylinder Head Gasket)



AH6440

