



DAF - Ø 130

87-70433-STD A



Motor Özellikleri
(Engine Specifications)

İmalatçı (Manufacturer):
DAF
Çap (Diameter): 130
FM Grup No: 2209

DKSB

6 Sil. Dizel 11630cc 15:1
Turbocharged
SB3000 Serisi
1973 - 1989

DKTL

6 Sil. Dizel 11630cc
248 Kw (360PS) 15:1
Turbocharged
MB G Serisi,
MB200/5 Serisi,
SB201/210 Serisi

DKCL

6 Sil. Dizel 11630cc 15:1
direkt püskürtme.
(Direct Spray)
MB200/5 Serisi,
MB230/5 Serisi
1973...

DKFL

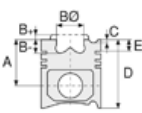
6 Sil. Dizel 11630cc 15:1
direkt püskürtme.
(Direct Spray)
MB200/5 Serisi,
MB230/5 Serisi,
S220 Serisi
1973...

DKVL

6 Sil. Dizel 11630cc 15:1
direkt püskürtme.
(Direct Spray)
MB200/5 Serisi,
MB230 Serisi
1973 - 1989

KT191

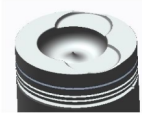
6 Sil. Dizel 11630cc
256 Kw (340PS) 15:1
Turbocharged Intercool
F80-260 Serisi



Piston Ölçüleri
(Piston Dimensions)

A : 101.000
B - : 29.100
BØ : 74.600
BX : 3.800
C1 : 4.000
D : 169.500
E : 25.000

Pim: 48 x 111



Piston Özellikleri
(Piston Features)

Segman Taşıyıcı
(Ring Carrier)
Sert Anotlama
(Hard Anodizing)
Yağ Püskürtme Oyuğu
(Oil Jet Cut-out)
Gözarası Düz
(Flat Eye Gap)



Piston Parça No
(Piston Part No)

87-174100-12
87-70433-STD A



Segman Seti
(Ring Set)

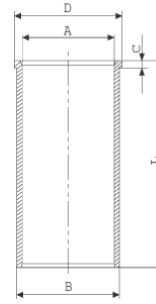
06-174100-20-STD

3.160 CR IKA
3.160 CR STD
3.160 CR STD
6.335 CR STD



Silindir Gömleği
(Liner)

14-021410-00-DH
B : 136.020
L : 288.300
D : 143.600
C : 10.050

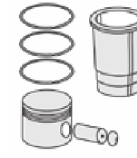


14-021411-00-DH
B : 136.270
L : 288.300
D : 143.600
C : 10.050

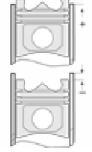
Dış Çap 0,25mm Farklı
(Outer Diameter
0,25mm Different)

14-021412-00-DH
B : 136.520
L : 288.300
D : 143.600
C : 10.050

Dış Çap 0,50mm Farklı
(Outer Diameter
0,50mm Different)



Silindir Kit
(Assembly Set)



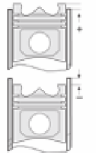
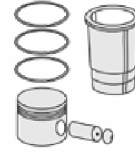
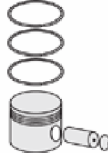
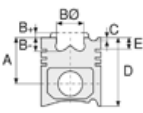
Piston - Blok Montaj
Yüksekliği
(Piston - Block
Assembly Height)

- 0,25 / + 0,25



DAF - Ø 130

87-70433-STDA



Motor Özellikleri
(Engine Specifications)

Piston Ölçüleri
(Piston Dimensions)

Piston Parça No
(Piston Part No)

Segman Seti
(Ring Set)

Silindir Gömleği
(Liner)

Silindir Kit
(Assembly Set)

Piston - Blok Montaj
Yüksekliği
(Piston - Block
Assembly Height)

DKZ
6 Sil. Dizel 11630cc 15:1
Turbocharged
F3600 Serisi
1984...

DKTD
6 Sil. Dizel 11630cc
256 Kw (340PS) 15:1
Turbocharged
F2800 Serisi,
N2800 Serisi
1974 - 1991

DKT
6 Sil. Dizel 11630cc
286 Kw (388PS) 15:1
Turbocharged
F 2800 Serisi
1974 - 1986

DKSE
6 Sil. Dizel 11630cc
276 Kw (375PS) 15:1
Turbocharged
F 2800 Serisi,
N2800 Serisi
1980 - 1990

DKX
6 Sil. Dizel 11630cc
325 Kw (441PS) 15:1
Turbocharged Intercool
F 3300 Serisi,
N 3300 Serisi
1981 - 1991

DKV
6 Sil. Dizel 11630cc 15:1
Turbocharged
F 2800 Serisi
1983 - 1991

LT160 1160
6 Sil. Dizel 11630cc 15:1
direkt püskürtme.
(Direct Spray)
SB220 Serisi,
SB3000 Serisi
1992...



DAF - Ø 130

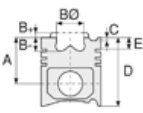
87-70433-STD A



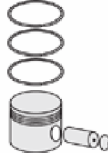
Motor Özellikleri
(Engine Specifications)

Lt195 1160
6 Sil. Dizel 11630cc 15:1
direkt püskürtme.
(Direct Spray)
SB3000 Serisi
1992...

LT210 1160
6 Sil. Dizel 11630cc 15:1
direkt püskürtme.
(Direct Spray)
SB3000 Serisi
1992...



Piston Ölçüleri
(Piston Dimensions)



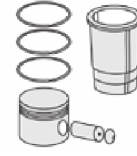
Piston Parça No
(Piston Part No)



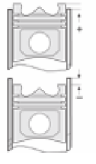
Segman Seti
(Ring Set)



Silindir Gömleği
(Liner)

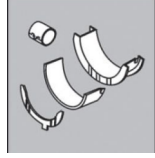


Silindir Kit
(Assembly Set)



Piston - Blok Montaj
Yüksekliği
(Piston - Block
Assembly Height)

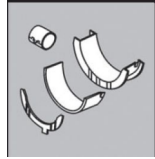
Ana Yatak
(Main Bearing)



H 005/7-STD

H022/7P STD

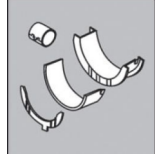
Kol Yatak
(Connecting Rod Bearing)



71-3631/6P STD

71-3291/6P STD

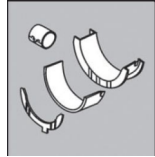
Eksantrik Yatak
(Camshaft Bearing)



N095/5

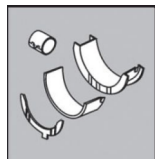
N095/5 STD

Ay Yatak
(Thrust Washer)



A023/4 STD

Kol Burcu
(Small End Bushing)



55-3792-SEMİ

Silindir Kapak Conta
(Cylinder Head Gasket)



DL717

