

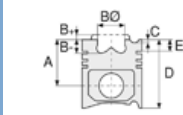


Motor Özellikleri
(Engine Specifications)

İmalatçı (Manufacturer):
MERCEDES BENZ LKW
Çap (Diameter): Ø 97
FM Grup No: 5942

**OM 352, OM 353.900/
903/904/905/906/
907/908/909/911**

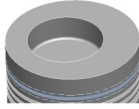
6 Sil. Dizel 5673cc
51,5/99,5 Kw
(70/130 PS) 17:1
1013, 1113, 1213, 1313, 1317,
1413, 1417, 1513, 1613, 1617,
1713, 310, 323, 327, 328,
329, 613, 710, 810, 811,
813, 911, 913, HHF, O 302,
O 305, O 309, O 311,
O 312, O 321, O 322
1974 - 1982



Piston Ölçüleri
(Piston Dimensions)

A : 65.200
B - : 20.000
BØ : 55.000
BX : 5.000
D : 115.700
E : 17.000

Pim: 36 x 82,5



Piston Özellikleri
(Piston Features)

Segman Taşıyıcı
(Ring Carrier)
Gözarası Düz
(Flat Eye Gap)



Piston Parça No
(Piston Part No)

87-178800-13
87-70490-STDC
0,30 mm Kısa (Short)

87-178800-14
87-70490-STDC
0,60 mm Kısa (Short)

87-178800-12
87-70490-STDC

87-178807-12
87-70490 050C

87-178811-12
87-70490 100C



Segman Seti
(Ring Set)

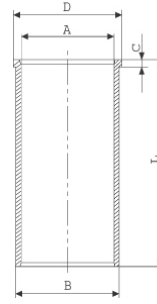
06-178800-20-STD
06-178807-20 0,50 mm
06-178811-20 1,00 mm

3.000 CR KV1
3.000 STD
3.000 STD
5.500 CR STD



Silindir Gömleği
(Liner)

14-021850-00-D
B : 101.000
L : 222.000
D : 103.500
C : 5.500



14-021851-00-D
B : 102.000
L : 222.000
D : 104.500
C : 5.500

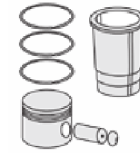
Dış Çap 1,0 mm Farklı
(Outer Diameter
1,00 mm Different)

14-021852-00 D
B : 103.000
L : 222.000
D : 105.500
C : 5.500

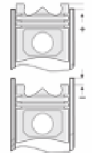
Dış Çap 2,0 mm Farklı
(Outer Diameter
0,20 mm Different)

14-021853-00 D
B : 101.500
L : 222.000
D : 104.000
C : 5.500

Dış Çap 0,50 mm Farklı
(Outer Diameter
0,50 mm Different)



Silindir Kit
(Assembly Set)



Piston - Blok Montaj
Yüksekliği
(Piston - Block
Assembly Height)

- 0,08 / + 0,30



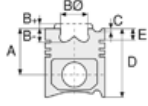


MERCEDES BENZ LKW - Ø 97

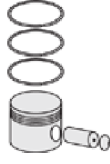
87-70490-STD



Motor Özellikleri
(Engine Specifications)



Piston Ölçüleri
(Piston Dimensions)



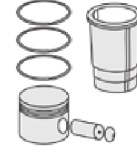
Piston Parça No
(Piston Part No)



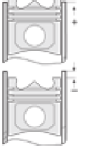
Segman Seti
(Ring Set)



Silindir Gömleği
(Liner)

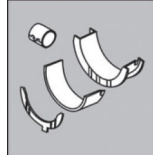


Silindir Kit
(Assembly Set)



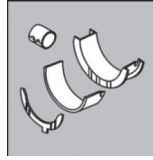
Piston - Blok Montaj
Yüksekliği
(Piston - Block
Assembly Height)

Ana Yatak
(Main Bearing)



H712/7 STD

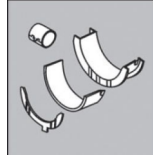
Kol Yatak
(Connecting Rod Bearing)



71-3572/4 STD

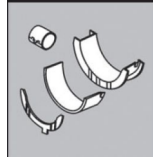
01-3438 STD

Eksantrik Yatak
(Camshaft Bearing)



N049/4L STD

Kol Burcu
(Small End Bushing)



55-2535 SEMI

Silindir Kapak Conta
(Cylinder Head Gasket)



30-025093-20

BS310

