

**Motor Özellikleri**  
(Engine Specifications)

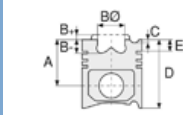
İmalatçı (Manufacturer):  
MERCEDES BENZ LKW  
Çap (Diameter): Ø 97  
FM Grup No: 5945

**OM 314.963**

4 Sil. Dizel 3782cc  
53/63 Kw (72/85 PS) 17:1  
408, 508, 608, 707,  
709, 808, 809, O 309  
1964 - 1981

**OM 352.906 ,  
OM353.949**

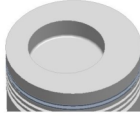
6 Sil. Dizel 5673cc  
51,5/99,5 Kw  
(70/130 PS) 17:1  
1013, 1113, 1213, 1313,  
1413, 1513, 1613, 408,  
508, 608, 613, 709,  
710, 808, 809, 810,  
811, 813, 911, 913  
1964 - 1982



**Piston Ölçüleri**  
(Piston Dimensions)

A : 65.200  
B - : 20.000  
BØ : 55.000  
BX : 5.000  
D : 115.700  
E : 17.000

Pim: 36 x 82,5



**Piston Özellikleri**  
(Piston Features)

Segman Taşıyıcı  
(Ring Carrier)  
Gözarası Düz  
(Flat Eye Gap)



**Piston Parça No**  
(Piston Part No)

87-174300-72  
87-70492-STDC  
  
87-174307-72  
87-70492 050C  
  
87-174311-72  
87-70492 100C  
  
87-174314-72  
87-70492 150C



**Segman Seti**  
(Ring Set)

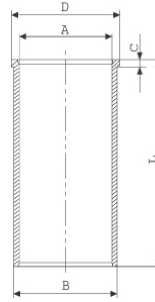
06-174300-70-STD  
06-174307-70 0,50 mm  
06-174311-70 1,00 mm

3.000 CR KV1  
3.000 GOE  
3.000 GOE  
5.500 CR GOE  
5.500 STD



**Silindir Gömleği**  
(Liner)

14-021850-00-D  
B : 101.000  
L : 222.000  
D : 103.500  
C : 5.500



14-021851-00-D  
B : 102.000  
L : 222.000  
D : 104.500  
C : 5.500

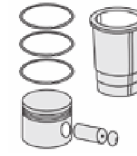
Dış Çap 1,0 mm Farklı  
(Outer Diameter  
1,0 mm Different)

14-021852-00 D  
B : 103.000  
L : 222.000  
D : 105.500  
C : 5.500

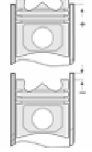
Dış Çap 2,0 mm Farklı  
(Outer Diameter  
2,0 mm Different)

14-021853-00 D  
B : 101.500  
L : 222.000  
D : 104.000  
C : 5.500

Dış Çap 0,50 mm farklı  
(Outer Diameter  
0,50 mm Different)



**Silindir Kit**  
(Assembly Set)



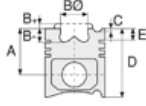
**Piston - Blok Montaj**  
Yüksekliği  
(Piston - Block  
Assembly Height)

- 0,07 / + 0,35





Motor Özellikleri  
(Engine Specifications)



Piston Ölçüleri  
(Piston Dimensions)



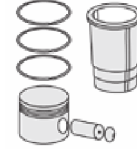
Piston Parça No  
(Piston Part No)



Segman Seti  
(Ring Set)



Silindir Gömleği  
(Liner)

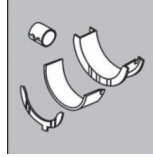


Silindir Kit  
(Assembly Set)



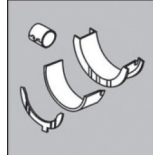
Piston - Blok Montaj  
Yüksekliği  
(Piston - Block  
Assembly Height)

Ana Yatak  
(Main Bearing)



H712/5 STD

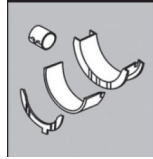
Kol Yatak  
(Connecting Rod Bearing)



71-3572/4 STD

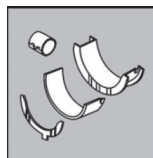
01-3438 STD

Eksantrik Yatak  
(Camshaft Bearing)



N122/3L SEMI

Kol Burcu  
(Small End Bushing)



55-2535 SEMI

Silindir Kapak Conta  
(Cylinder Head Gasket)

30-025093-10

30-025093-20

