



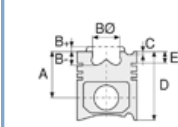
Motor Özellikleri
(Engine Specifications)

İmalatçı (Manufacturer):
MERCEDES BENZ LKW
Çap (Diameter): Ø 97
FM Grup No: 5946

**OM 352A.353.909-
914/950-954/970-
972/974**

6 Sil. Dizel 5675cc
92/127 Kw (125/173 PS) 17:1
Turbo

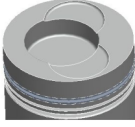
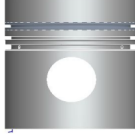
1013, 1017, 1100, 1213,
1217, 1300, 1313, 1417,
1500, 1513, 1613, 1617,
1813, 300, 917, U1000,
U1200, U1300, U150,
U1500, U1700, U425
1971 - 1982



Piston Ölçüleri
(Piston Dimensions)

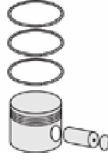
A : 65.200
B - : 20.000
BØ : 55.000
BX : 5.000
C1 : 2.200
D : 105.200
E : 21.000

Pim: 36 x 82,5



Piston Özellikleri
(Piston Features)

Segman Taşıyıcı
(Ring Carrier)
Gözarası Düz
(Flat Eye Gap)



Piston Parça No
(Piston Part No)

87-178200-43
87-70495-STDC1
0,30 mm Kısa (Short)

87-178200-44
87-70495-STDC2
0,60 mm Kısa (Short)

87-178200-42
87-70495-STDC

87-178207-42
87-70495 050C

87-178211-42
87-70495 100C



Segman Seti
(Ring Set)

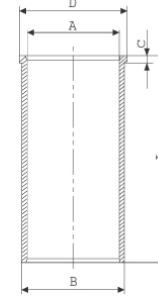
06-178200-80-STD
06-178207-80 0,50 mm
06-178211-80 1,00 mm

2.500 CK KV1
2.500 CK STD
4.000 CR STD



Silindir Gömleği
(Liner)

14-021850-00-D
B : 101.000
L : 222.000
D : 103.500
C : 5.500



14-021851-00-D
B : 102.000
L : 222.000
D : 104.500
C : 5.500

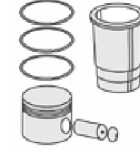
Dış Çap 1,0 mm Farklı
(Outer Diameter
1,0 mm Different)

14-021852-00 D
B : 103.000
L : 222.000
D : 105.500
C : 5.500

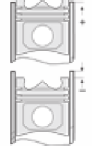
Dış Çap 2,0 mm Farklı
(Outer Diameter
2,0 mm Different)

14-021853-00 D
B : 101.500
L : 222.000
D : 104.000
C : 5.500

Dış Çap 0,50 mm farklı
(Outer Diameter
0,50 mm Different)



Silindir Kit
(Assembly Set)



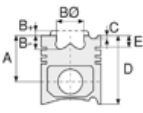
Piston - Blok Montaj
Yüksekliği
(Piston - Block
Assembly Height)

- 0,07 / + 0,30





Motor Özellikleri
(Engine Specifications)



Piston Ölçüleri
(Piston Dimensions)



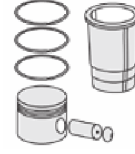
Piston Parça No
(Piston Part No)



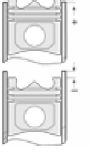
Segman Seti
(Ring Set)



Silindir Gömleği
(Liner)

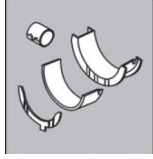


Silindir Kit
(Assembly Set)



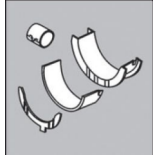
Piston - Blok Montaj
Yüksekliği
(Piston - Block
Assembly Height)

Ana Yatak
(Main Bearing)



H712/7 STD

Kol Yatak
(Connecting Rod Bearing)

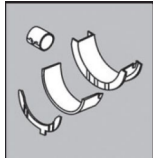


71-3572/6 STD

01-3438 STD

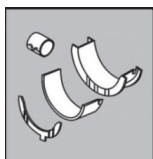
11-3438 0.25mm

Eksantrik Yatak
(Camshaft Bearing)



N049/4L STD

Kol Burcu
(Small End Bushing)



55-2535 SEMI

Silindir Kapak Conta
(Cylinder Head Gasket)



30-026026-50

AS410

