



MERCEDES BENZ LKW - Ø 97,5

87-70500-STDC

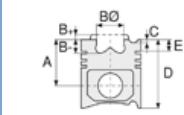


Motor Özellikleri
(Engine Specifications)

İmalatçı (Manufacturer):
MERCEDES BENZ LKW
Çap (Diameter): Ø 97,5
FM Grup No: 5949

OM 364.906/907/912
4 Sil. Dizel 3972cc 66/85
Kw (90/115 PS) 17:1
İş Makinası (Working
Machine)
1966....

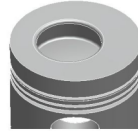
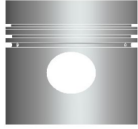
**OM 366.905/907/
909/910/912/914/
917/919/930**
6 Sil. Dizel 5958cc
100 Kw (136 PS) 17:1
1114, 1314, 1414, 1614,
709, 809, 811, 814,
914, O 301, O 402
1984....



Piston Ölçüleri
(Piston Dimensions)

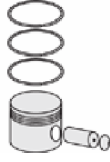
A : 62.800
B- : 22.700
BØ : 48.000
BX : 5.000
D : 107.800
E : 20.600

Pim: 36 x 82,5



Piston Özellikleri
(Piston Features)

Segman Taşıyıcı
(Ring Carrier)
Gözarası Düz
(Flat Eye Gap)



Piston Parça No
(Piston Part No)

87-740000-23
87-70500-STD1B
0,30 mm Kısa (Short)

87-740000-24
87-70500-STD2B
0,60 mm Kısa (Short)

87-740000-22
87-70500-STD B

87-740007-22
87-70500 050

87-740000-03
87-70500-STD1C
0,30 mm Kısa (Short)

87-740000-04
87-70500-STD2C
0,60 mm Kısa (Short)

87-740000-02
87-70500-STDC

87-740007-02
87-70500 050A



Segman Seti
(Ring Set)

06-740000-30-STD
06-740007-30 0.50 mm

2.500 PVD ST
2.500 CR GOE
4.000 CR STD

Goetze® LKZ-Ring®

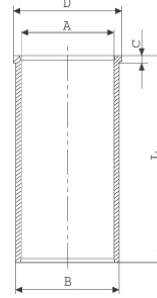
06-740000-80-STD
06-740007-80 0,50 mm

2.500 CK KV1
2.500 CR GOE
4.000 CR STD



Silindir Gömleği
(Liner)

14-025800-20-D
B : 100.400
L : 222.000
D : 103.500
C : 5.200



14-025801-20-D
B : 101.000
L : 222.000
D : 104.000
C : 5.500

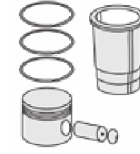
Dış Çap 0,60mm Farklı
(Outer Diameter
0,60 mm Different)

14-025802-20-D
B : 102.000
L : 222.000
D : 105.000
C : 6.000

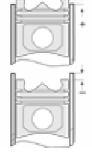
Dış Çap 1,60mm Farklı
(Outer Diameter
1,60 mm Different)

14-025806-20-D
B : 101.400
L : 222.000
D : 104.500
C : 6.000

Dış Çap 1,00mm Farklı
(Outer Diameter
1,00 mm Different)



Silindir Kit
(Assembly Set)



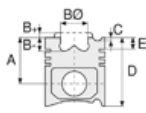
Piston - Blok Montaj
Yüksekliği
(Piston - Block
Assembly Height)

- 0,07 / + 0,30





Motor Özellikleri
(Engine Specifications)



Piston Ölçüleri
(Piston Dimensions)



Piston Parça No
(Piston Part No)



Segman Seti
(Ring Set)



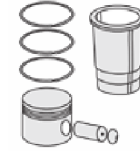
Silindir Gömleği
(Liner)

14-025807-20-D
B : 100.650
L : 222.000
D : 103.750
C : 5.500

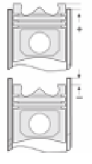
Dış Çap 0,25mm Farklı
(Outer Diameter
0,25 mm Different)

14-025808-20-D
B : 100.500
L : 222.000
D : 103.500
C : 5.200

Dış Çap 0,10 mm Farklı
(Outer Diameter
0,10 mm Different)

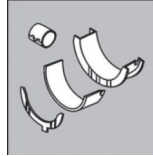


Silindir Kit
(Assembly Set)



Piston - Blok Montaj
Yüksekliği
(Piston - Block
Assembly Height)

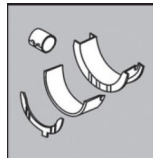
Ana Yatak
(Main Bearing)



H048/5 STD

H048/7 STD

Kol Yatak
(Connecting Rod Bearing)

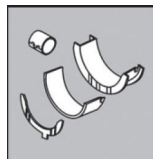


71-3572/4 STD

01-3438 STD

11-3438 0.25mm

Kol Burcu
(Small End Bushing)



55-2535 SEMI

Silindir Kapak Conta
(Cylinder Head Gasket)



30-025093-20

BS310

