



Motor Özellikleri
(Engine Specifications)

İmalatçı (Manufacturer):
MERCEDES BENZ LKW
Çap (Diameter): Ø 97,5
FM Grup No: 5950

OM 364A.952/953/954

4 Sil. Dizel 3972cc
85 Kw (115 PS) 16,3:1
Turbo
711, 811, O 611
1984....

OM 364LA

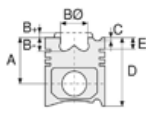
4 Sil. Dizel 3972cc
100 Kw (136 PS) 16,3:1
Turbocharged Intercool
814, O 614
1987....

OM 366A.953/962

6 Sil. Dizel 5958cc
116/125 Kw
(158/170 PS) 16,3:1
Turbo
1117, 1317, 1417, 1517, 1617,
817, 917, O 301, O 402
1984....

OM 366LA.980/988

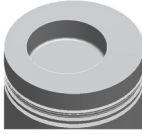
6 Sil. Dizel 5958cc
148/155 Kw
(201/211 PS) 16,3:1
Turbocharged Intercool
1017, 1120, 1320, 1419,
1617, 1620, 2219, 2220,
2222, 2517, 2521
1984....



Piston Ölçüleri
(Piston Dimensions)

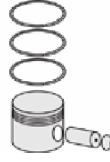
A : 62.800
B- : 22.350
BØ : 56.000
BX : 5.000
D : 107.800
E : 20.600

Pim: 36 x 82,5



Piston Özellikleri
(Piston Features)

Segman Taşıyıcı
(Ring Carrier)
Gözarası Düz
(Flat Eye Gap)



Piston Parça No
(Piston Part No)

87-740000-53
87-70501-STD1B
0,30 mm Kısa (Short)

87-740000-54
87-70501-STD2B
0,60 mm Kısa (Short)

87-740000-52
87-70501-STDB

87-740007-52
87-70501 050B

87-740011-52
87-70501 1,00B

87-740000-63
87-72561-STD1B
0,20 mm Kısa (Short)

87-740000-62
87-72561-STDB
Sert Anotlu (Hard Anode)

87-740007-62
87-72561 0,50B

87-740000-83
87-70501-STD1C
0,30 mm Kısa (Short)

87-740000-84
87-70501-STD2C
0,60 mm Kısa (Short)

87-740000-82
87-70501-STDC

87-740007-82
87-70501 050C



Segman Seti
(Ring Set)

06-740000-30-STD
06-740007-30 0.50 mm

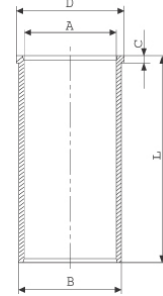
2.500 PVD ST
2.500 CR GOE
4.000 CR STD

Goetze® LKZ-Ring®



Silindir Gömleği
(Liner)

14-025800-20-D
B : 100.400
L : 222.000
D : 103.500
C : 5.200



14-025801-20-D
B : 101.000
L : 222.000
D : 104.000
C : 5.500

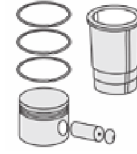
Dış Çap 0,60mm Farklı
(Outer Diameter
0,60 mm Different)

14-025802-20-D
B : 102.000
L : 222.000
D : 105.000
C : 6.000

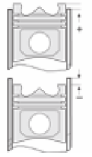
Dış Çap 1,60mm Farklı
(Outer Diameter
1,60 mm Different)

14-025806-20-D
B : 101.400
L : 222.000
D : 104.500
C : 6.000

Dış Çap 1,00mm Farklı
(Outer Diameter
1,00 mm Different)



Silindir Kit
(Assembly Set)



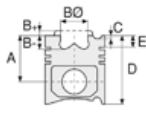
Piston - Blok Montaj
Yüksekliği
(Piston - Block
Assembly Height)

- 0,07 / + 0,30

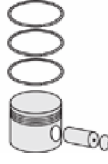




Motor Özellikleri
(Engine Specifications)



Piston Ölçüleri
(Piston Dimensions)



Piston Parça No
(Piston Part No)



Segman Seti
(Ring Set)



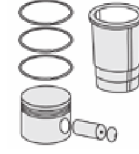
Silindir Gömleği
(Liner)

14-025807-20-D
B : 100.650
L : 222.000
D : 103.750
C : 5.500

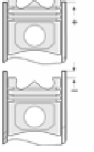
Dış Çap 0,25mm Farklı
(Outer Diameter
0,25 mm Different)

14-025808-20-D
B : 100.500
L : 222.000
D : 103.500
C : 5.200

Dış Çap 0,10 mm Farklı
(Outer Diameter
0,10 mm Different)



Silindir Kit
(Assembly Set)

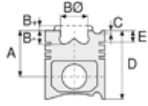


Piston - Blok Montaj
Yüksekliği
(Piston - Block
Assembly Height)

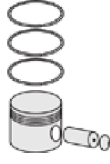




Motor Özellikleri
(Engine Specifications)



Piston Ölçüleri
(Piston Dimensions)



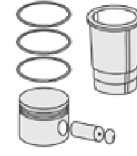
Piston Parça No
(Piston Part No)



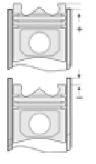
Segman Seti
(Ring Set)



Silindir Gömleği
(Liner)

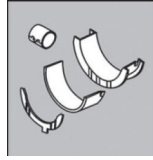


Silindir Kit
(Assembly Set)



Piston - Blok Montaj
Yüksekliği
(Piston - Block
Assembly Height)

Eksantrik Yatak
(Camshaft Bearing)

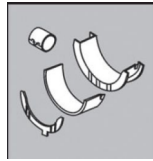


H048/7 STD

N0494L STD

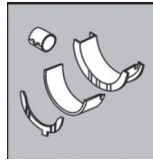
N0494L SEMI

Ana Yatak
(Main Bearing)



H048/7 STD

Kol Yatak
(Connecting Rod Bearing)

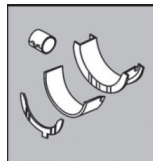


71-3572/6 STD

01-3438 STD

11-3438 0.25 MM

Kol Burcu
(Small End Bushing)



55-2535 SEMI

Sil. Kapak. Conta
(Cylinder Head Gasket)



30-025093-20

BS310