

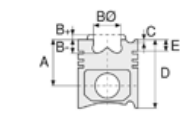


Motor Özellikleri
(Engine Specifications)

İmalatçı (Manufacturer):
MERCEDES BENZ LKW
Çap (Diameter): Ø 128
FM Grup No: 5962

OM 447HLA EURO2.
904-907/970-979..

6 Sil. Dizel 11967cc
157-220 Kw (214-300 PS)
18:1
Turbocharged Intercool
O 345, O 405,
O 407, O 408
1984....



Piston Ölçüleri
(Piston Dimensions)

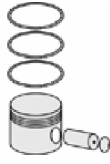
A : 89.930
B- : 23.880
BØ : 75.150
BX : 3.000
BY : 1.170
D : 139.930
E : 23.250

Pim: 46 x 105



Piston Özellikleri
(Piston Features)

Segman Taşıyıcı
(Ring Carrier)
Sert Anotlama
(Hard Anodizing)
Yağ Püskürtme Oyuğu
(Oil Jet Cut-out)
Gözarası Konik
(Conical Eye Gap)



Piston Parça No
(Piston Part No)

87-179300-02
87-70504-STD

87-179300-03
87-70504-STD1
0,30 mm Kısa (Short)



Segman Seti
(Ring Set)

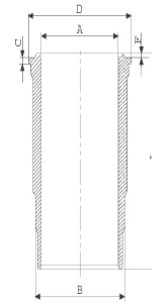
06-179300-20-STD

3.000 PS ST
3.000 CR IKA
4.000 CK STD
Goetze® LKZ-Ring®



Silindir Gömleği
(Liner)

14-456980-00-WH
B : 144.500
L : 270.000
D : 153.800
C : 9.920
F : 1.000



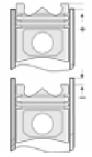
O-RİNG Bilgi
(O-RING Information)
24-26802-00/O
1x 140*1,9 FPM
2x 144*3,8 FPM
1 ADET SHIM

14-456980-00-WH
O-RİNG Bilgi
(O-RING Information)
24-26802-00/O
1x 140*1,9 FPM
2x 144*3,8 FPM
1 ADET SHIM



Silindir Kit
(Assembly Set)

89-179300-02-STD
89-70504-STD



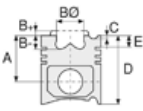
Piston - Blok Montaj
Yüksekliği
(Piston - Block
Assembly Height)

+ 0,07 / + 0,43





Motor Özellikleri
(Engine Specifications)



Piston Ölçüleri
(Piston Dimensions)



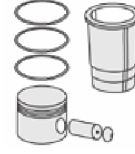
Piston Parça No
(Piston Part No)



Segman Seti
(Ring Set)



Silindir Gömleği
(Liner)



Silindir Kit
(Assembly Set)



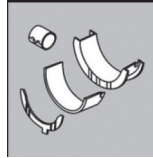
Piston - Blok Montaj
Yüksekliği
(Piston - Block
Assembly Height)

Ana Yatak
(Main Bearing)



H992/7 STD

Kol Yatak
(Connecting Rod Bearing)

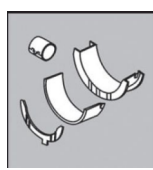


71-3637 STD

71-2965 STD

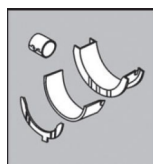
71-3561/6 STD

Eksantrik Yatak
(Camshaft Bearing)



N109/7L STD

Kol Burcu
(Small End Bushing)



55-3328 SEMI

Silindir Kapak Conta
(Cylinder Head Gasket)



30-024941-30

30-026235-10

30-026235-30

