



Motor Özellikleri
(Engine Specifications)

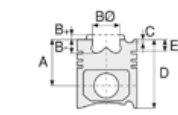
İmalatçı (Manufacturer):
MERCEDES BENZ LKW
Çap (Diameter): Ø 128
FM Grup No: 59031

**OM422LA.901/
953/955/959**

8 Sil. Dizel 14618cc
184-390Kw(250-530 Ps)
16,25:1
TURBO INTERCOOLER
1245, 1644, 1748, 1750,
1850, 1944, 1948, 2244,
2448, 2550, 2644, 2648,
2650, 3050, 3248, 3250,
3344, 3544, 3548, 3550,
4044, 4844, 5248,
Actros 2644
1980....

OM442LA

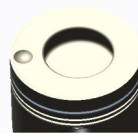
8 Sil. Dizel 14618cc
320-368Kw(435-500Ps)
16,25:1
TURBO INTERCOOLER
1245, 1644, 1748, 1750,
1850, 1944, 1948, 2244,
2448, 2550, 2644, 2648,
2650, 3050, 3248, 3250,
3344, 3544, 3548, 3550,
4044, 4844, 5248
1985 - 1990



Piston Ölçüleri
(Piston Dimensions)

A : 81.350
B - : 26.000
BØ : 65.440
BX : 3.000
BY : 1.500
D : 126.350
E : 21.100

Pim: 46 x 105



Piston Özellikleri
(Piston Features)

Segman Taşıyıcı
(Ring Carrier)
Sert Anotlama
(Hard Anodizing)
Yağ Püskürtme Oyuğu
(Oil Jet Cut-out)
Burçlu Piston
(Bushing Piston)
Gözarası Düz
(Flat Eye Gap)



Piston Parça No
(Piston Part No)

87-179300-52
87-70509-STD A



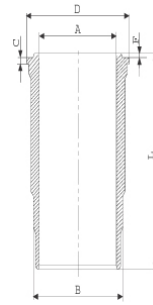
Segman Seti
(Ring Set)

06-179300-20-STD
3.000 PS ST
3.000 CR IKA
4.000 CR STD
Goetze® LKZ-Ring®



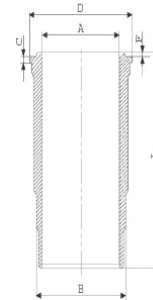
Silindir Gömleği
(Liner)

14-452030-00-WH
B : 144.500
L : 253.000
D : 153.800
C : 9.920
F : 1.000

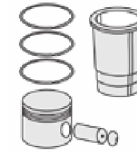


O-RİNG Bilgi
(O-RING Information)
24-26802-00/O
2x 144*3,8 FPM
1x 140*1,9 FPM
1 ADET SHIM

14-451160-00-WH
B : 144.500
L : 253.000
D : 153.800
C : 10.070
F : 1.000

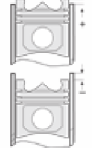


O-RİNG Bilgi
(O-RING Information)
24-35005-00/O
2x 140*1,9 FPM
2x 144*3,8 FPM



Silindir Kit
(Assembly Set)

89-179300-52-STD
89-70509-STD A



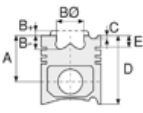
Piston - Blok Montaj
Yüksekliği
(Piston - Block
Assembly Height)

+ 0,07 / + 0,43





Motor Özellikleri
(Engine Specifications)



Piston Ölçüleri
(Piston Dimensions)



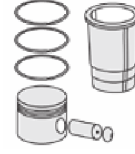
Piston Parça No
(Piston Part No)



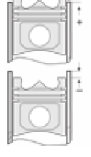
Segman Seti
(Ring Set)



Silindir Gömleği
(Liner)

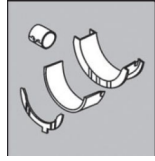


Silindir Kit
(Assembly Set)



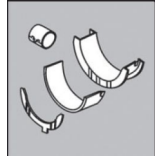
Piston - Blok Montaj
Yüksekliği
(Piston - Block
Assembly Height)

Ana Yatak
(Main Bearing)



H821/4 STD

Kol Yatak
(Connecting Rod Bearing)

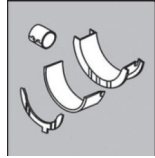


71-3638 STD

71-3289/2 STD

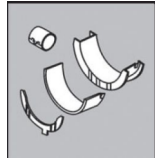
71-2965 STD

Eksantrik Yatak
(Camshaft Bearing)



N110/5L STD

Kol Burcu
(Small End Bushing)



55-3328 SEMI

Silindir Kapak Conta
(Cylinder Head Gasket)



30-024941-30

30-026235-10

