

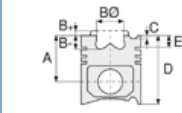


Motor Özellikleri
(Engine Specifications)

İmalatçı (Manufacturer):
MERCEDES BENZ LKW
Çap (Diameter): Ø 128
FM Grup No: 5992

OM 457 LA EURO3

6 Sil. Dizel 12000cc
400 PS
Turbo Charged
InterCooled 24v
O 500, 1843, 1938,
1944, 2638, 2639,
Axor 1843, AXOR ÇEKİCİ
18.35 LS, AXOR ÇEKİCİ
18.40 LS, O403,
TOURISMO 15 RHD,
TOURISMO 17 RHD
2002....



Piston Ölçüleri
(Piston Dimensions)

A : 90.050
B- : 16.000
BØ : 93.150
D : 140.050
E : 12.000

Pim: 52 x 103



Piston Özellikleri
(Piston Features)

Segman Taşıyıcı
(Ring Carrier)
Soğutma Kanallı
(Coolin Gallery)
Yağ Püskürtme Oyuğu
(Oil Jet Cut-out)
Gözarası Konik
(Conical Eye Gap)



Piston Parça No
(Piston Part No)

87-876000-23
87-70510-STD1C
0,30 mm Kısa (Short)

87-876000-24
87-70510-STD2C
0,60 mm Kısa (Short)

87-876000-22
87-70510-STDC

87-876000-22
87-70510-STDF



Segman Seti
(Ring Set)

06-876000-20-STD

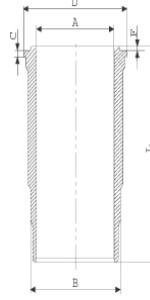
3.000 CK ST
3.000 CR GOE
4.000 CK KV1

Goetze® LKZ-Ring® /
Yağ Segmanı Matkap
Delikli (Oil Ring Drill
Perforated)



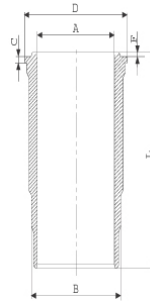
Silindir Gömleği
(Liner)

14-450380-00-WH
B : 144.500
L : 266.300
D : 155.480
C : 10.120
F : 1.100

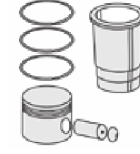


O-RİNG Bilgi
(O-RING Information)
24-35042-40/O
2x 144*154*7 FPM
1 ADET SHIM

14-450670-00-WH
B : 144.500
L : 266.300
D : 155.450
C : 10.120
F : 1.100

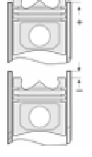


Flanş Çapı Küçük /
O-RING Bilgi
(Flange Diameter
Small / O-RING
Information)
24-35042-40/O
2x 144*154*7 FPM
1 ADET SHIM



Silindir Kit
(Assembly Set)

89-876000-22-STD
89-70510-STDC



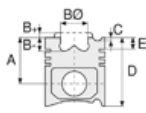
Piston - Blok Montaj
Yüksekliği
(Piston - Block
Assembly Height)

+0,22 / +0,71





Motor Özellikleri
(Engine Specifications)



Piston Ölçüleri
(Piston Dimensions)



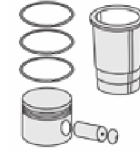
Piston Parça No
(Piston Part No)



Segman Seti
(Ring Set)



Silindir Gömleği
(Liner)



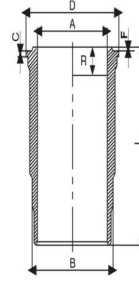
Silindir Kit
(Assembly Set)



Piston - Blok Montaj
Yüksekliği
(Piston - Block
Assembly Height)

15-451070-00-WH
B : 144.500
L : 266.300
D : 155.600
C : 10.120
F : 1.100
R : 6.500

89-876000-52-STD
89-70510-STD F



Kurum Giderme Ve
O-RİNGLİ /
O-RING Bilgi
(Soot Removal And
With O-RING /
O-RING Information)
24-35045-70/O
2x 144*154*7 FPM
1x 132,5*137*3,90 FPM
1ADET SHIM

14-450380-00-WH
O-RİNG Bilgi
(O-RING Information)
24-35042-40/O
2x 144*154*7 FPM
1 ADET SHIM

89-876000-23-STD
89-70510-STD IC

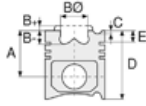
15-451070-00-WH
Kurum Giderme Ve
O-RİNGLİ /
O-RING Bilgi
(Soot Removal And
With O-RING /
O-RING Information)
24-35045-70/O
2x 144*154*7 FPM
1x 132,5*137*3,90 FPM
1ADET SHIM

89-876000-53-STD
89-70510-STD IF





Motor Özellikleri
(Engine Specifications)



Piston Ölçüleri
(Piston Dimensions)



Piston Parça No
(Piston Part No)

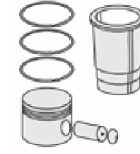


Segman Seti
(Ring Set)



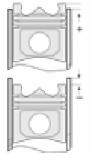
Silindir Gömleği
(Liner)

14-450380-00 WH
O-RİNG Bilgi
(O-RING Information)
24-35042-40/O
2x 144*154*7 FPM
1 ADET SHIM



Silindir Kit
(Assembly Set)

89-876000-24-STD
89-70510-STD2C



Piston - Blok Montaj
Yüksekliği
(Piston - Block
Assembly Height)

14-451070-00-WH
B : 144.500
L : 266.300
D : 155.600
C : 10.120
F : 1.100
R : 6.500

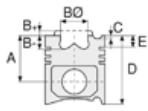
89-876000-54-STD
89-70510-STD2F

Kurum Giderme Ve
O-RİNGLİ /
O-RİNG Bilgi
(Soot Removal And
With O-RING /
O-RING Information)
24-35045-70/O
2x 144*154*7 FPM
1x 132,5*137*3,90 FPM
1 ADET SHIM

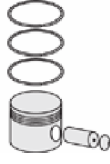




Motor Özellikleri
(Engine Specifications)



Piston Ölçüleri
(Piston Dimensions)



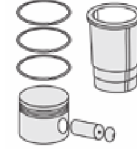
Piston Parça No
(Piston Part No)



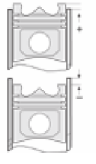
Segman Seti
(Ring Set)



Silindir Gömleği
(Liner)

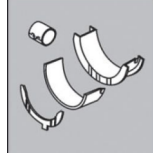


Silindir Kit
(Assembly Set)



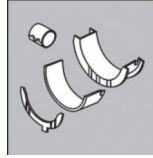
Piston - Blok Montaj
Yüksekliği
(Piston - Block
Assembly Height)

Ana Yatak
(Main Bearing)



H075/7 STD

Kol Yatak
(Connecting Rod Bearing)

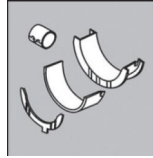


71-3893/6 STD

71-2965 STD

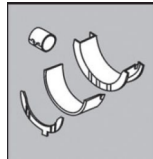
71-4784 STD

Eksantrik Yatak
(Camshaft Bearing)



N205/7 SEMI

Kol Burcu
(Small End Bushing)



55-3328 SEMI

Silindir Kapak Conta
(Cylinder Head Gasket)

30-030171-00



30-030424-00

AF5370

Üst Takım Conta
(Cylinder Head Full Gasket)



21-30171-00/0

Alt Takım Conta
(Cylinder Gasket Crankcase)



22-23336-10/0

