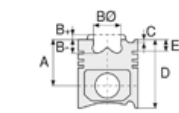




Motor Özellikleri
(Engine Specifications)

İmalatçı (Manufacturer):
MERCEDES BENZ LKW
Çap (Diameter): Ø 115
FM Grup No: 5954

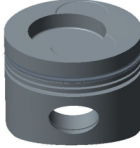
OM 360A
6 Sil. Dizel 8725cc
154 Kw (210 PS) 16,5:1
Turbo Motor no:103.360-
1978 - 1983



Piston Ölçüleri
(Piston Dimensions)

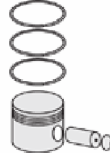
A : 85.300
B - : 22.000
BØ : 65.000
BX : 3.000
BY : 1.500
C1 : 0.700
C2 : 2.200
D : 133.300
E : 24.000

Pim: 42 x 98



Piston Özellikleri
(Piston Features)

Segman Taşıyıcı
(Ring Carrier)
Gözarası Düz
(Flat Eye Gap)



Piston Parça No
(Piston Part No)

87-176400-62
87-70515-STDB
87-176407-62
87-70515 050B
87-176411-62
87-70515 100B
87-176414-62
87-70515 150B
87-176416-62
87-70515 200B



Segman Seti
(Ring Set)

06-176400-30-STD
06-176407-30 0,50 mm
06-176411-30 1,00 mm
06-176414-30 1,50 mm
06-176416-30 2,0 mm

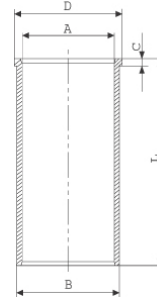
3.500 CR KV1
3.000 F14
5.500 CR STD

Goetze® LKZ-Ring®



Silindir Gömleği
(Liner)

14-024240-00-D
B : 120.000
L : 253.500
D : 125.000
C : 5.500

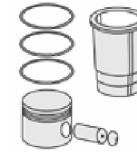


14-024241-00-D
B : 121.000
L : 253.500
D : 126.000
C : 6.000

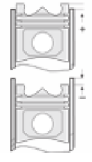
Dış Çap 1,0 mm Farklı
(Outer Diameter
1,0 mm Different)

14-024242-00-D
B : 122.000
L : 253.500
D : 127.000
C : 6.000

Dış Çap 2,0 mm Farklı
(Outer Diameter
2,0 mm Different)



Silindir Kit
(Assembly Set)



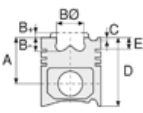
Piston - Blok Montaj
Yüksekliği
(Piston - Block
Assembly Height)

+ 0,30 / + 0,38

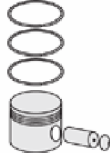




Motor Özellikleri
(Engine Specifications)



Piston Ölçüleri
(Piston Dimensions)



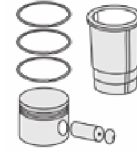
Piston Parça No
(Piston Part No)



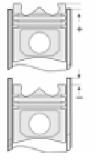
Segman Seti
(Ring Set)



Silindir Gömleği
(Liner)

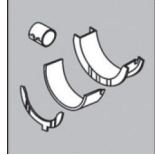


Silindir Kit
(Assembly Set)



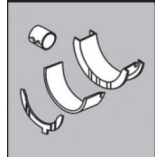
Piston - Blok Montaj
Yüksekliği
(Piston - Block
Assembly Height)

Ana Yatak
(Main Bearing)



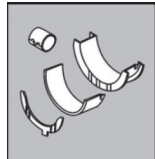
H809/7 STD

Kol Yatak
(Connecting Rod Bearing)



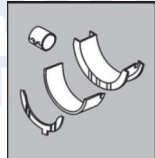
71-2811/6 STD

Eksantrik Yatak
(Camshaft Bearing)



N075/7L SEMI

Kol Burcu
(Small End Bushing)



55-2847 SEMI

