



MERCEDES BENZ LKW - Ø 128

87-70516-STD



Motor Özellikleri
(Engine Specifications)

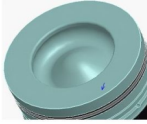
İmalatçı (Manufacturer):
MERCEDES BENZ LKW
Çap (Diameter): Ø 128
FM Grup No: 6022

OM 355
6 Sil. Dizel 11581cc
169-207 KW
(230-240 HP) 17,2:1
1968 - 1984

Piston Ölçüleri
(Piston Dimensions)

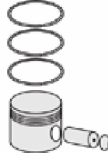
A : 90.560
B- : 23.000
BØ : 77.000
D : 140.560

Pim: 48 x 103



Piston Özellikleri
(Piston Features)

Segman Taşıyıcı
(Ring Carrier)
Gözarası Konik
(Conical Eye Gap)



Piston Parça No
(Piston Part No)

87-877607-03
87-70516-050

87-877611-03
87-70516-100
0,30 mm Kısa (Short)

87-877600-03
87-70516-STD

87-877600-04
87-70516-STD1
0,60 mm Kısa (Short)



Segman Seti
(Ring Set)

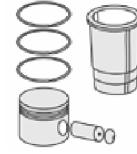
06-877600-00-STD
06-877607-00 0,50 mm
06-877611-00 1,00 mm

3.000 CKS KV4
2.500 CRP F14
4.000 CRP GOE

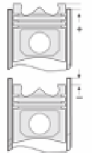
Goetze® LKZ-Ring®



Silindir Gömleği
(Liner)

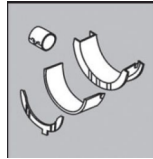


Silindir Kit
(Assembly Set)



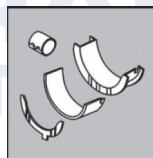
Piston - Blok Montaj
Yüksekliği
(Piston - Block
Assembly Height)

Ana Yatak
(Main Bearing)



H818/7 STD

Kol Yatak
(Connecting Rod Bearing)



71-3004 STD

71-2549/6 STD

