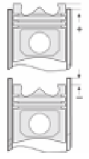
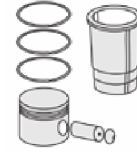
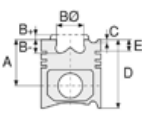
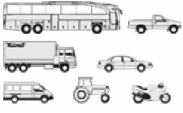




IVECO LKW- Ø 88

87-70679-STD



**Motor Özellikleri**  
(Engine Specifications)

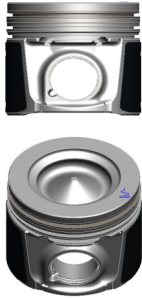
İmalatçı (Manufacturer):  
IVECO LKW  
Çap (Diameter): Ø 88  
FM Grup No: 4083

**C 13 - FIA Euro5**  
4 Sil. Dizel 2300cc  
96 KW-129 PS  
Daily  
2012....

**Piston Ölçüleri**  
(Piston Dimensions)

A : 57.000  
B- : 14.300  
BØ : 49.000  
D : 84.000  
E : 8.000

Pim: 31 x 67



**Piston Özellikleri**  
(Piston Features)

Segman Taşıyıcı  
(Ring Carrier)  
Soğutma Kanallı  
(Coolin Gallery)  
Yağ Püskürtme Oyuğu  
(Oil Jet Cut-out)  
Gözarası Konik  
(Conical Eye Gap)

**Piston Parça No**  
(Piston Part No)

87-844900-02  
87-70679-STD  
87-844906-02  
87-70679 0,40

**Segman Seti**  
(Ring Set)

06-844900-00-STD  
06-844906-00 0,40 mm  
2.500 CKS KV4  
2.000 F14  
2.500 CKS GOE

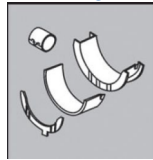
Yağ Segmanı Matkap Delik  
(Oil Ring Drill Hole)

**Silindir Gömleği**  
(Liner)

**Silindir Kit**  
(Assembly Set)

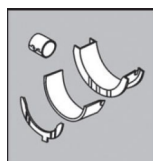
**Piston - Blok Montaj**  
Yüksekliği  
(Piston - Block  
Assembly Height)

**Ana Yatak**  
(Main Bearing)



H1020/5 STD

**Kol Yatak**  
(Connecting Rod Bearing)



71-4080/4 STD

**Silindir Kapak Conta**  
(Cylinder Head Gasket)



CB5720

